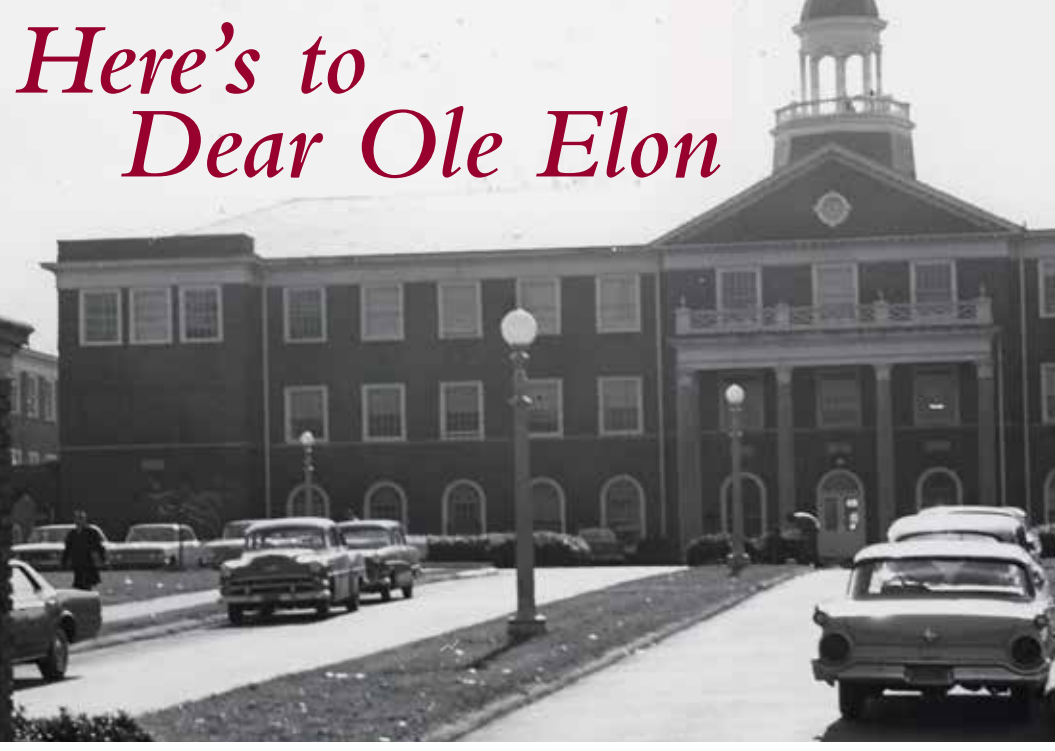




*Here's to
Dear Ole Elon*



HOMECOMING
OCT. 19-21, 2012





<i>All-Alumni Events</i>	1
<i>Class Reunion & Affinity Group Events</i>	4
Class of 2002 10th Anniversary.....	4
Class of 2007 Fifth Anniversary.....	4
Alpha Kappa Alpha 25th Anniversary.....	5
Alpha Omicron Pi 25th Anniversary.....	5
Alpha Pi Delta, Iota Tau Kappa, Kappa Psi Nu & Sigma Phi Beta.....	5
Band Alumni & Emanons 50th Anniversary.....	6
Department of History & Geography.....	6
Department of Mathematics & Statistics.....	6
Elon Black Alumni Network.....	6
Elon College Fellows Fifth Anniversary.....	7
Elon Hispanic-Latino Alumni Network.....	7
Elon Periclean Scholars.....	7
Elon Teaching Fellows 20th Anniversary.....	7
Kappa Alpha Order 30th Anniversary.....	7
Kappa Delta.....	7
Lambda Chi Alpha 20th Anniversary.....	8
LGBTQIA Alumni Network.....	8
Sigma Chi 25th Anniversary.....	9
Sigma Kappa.....	9
Sigma Phi Epsilon.....	10
Sigma Pi 35th Anniversary.....	10
Sport & Event Management and School of Communications.....	11
<i>Homecoming Hotel Accommodations</i>	11
<i>Information</i>	11

All-Alumni Events

FRIDAY, OCT. 19

Homecoming Check-In

10 a.m.–7 p.m. » Commuter Lounge, Moseley Center

Pick up event tickets, see schedules for the weekend and get answers to your questions. Bring your business card and let us turn it into a distinctive Elon luggage tag.

Alumni Golf Tournament hosted by the Phoenix Club

11 a.m. (lunch); noon (shotgun start) » The Challenge Golf Club, Graham

Contact Hilary Fogle '11 (hfogle@elon.edu or (336) 278-6503) to register. Please provide your name, class year, mailing address, phone number and handicap for flighting purposes. If you have a foursome, please be sure to include the players' names. **TICKETS:** \$75 per person (includes cart and greens fees, lunch, entry gift, beverage tickets and awards). **REGISTRATION DEADLINE:** Oct. 12

Campus Bus Tours

2–3:15 p.m. » Depart from Boney Fountain (east side of Moseley Center)

Enjoy a narrated trip around campus led by President Emeritus J. Earl Danieley '46 and Associate Dean of Admissions and Financial Planning Barry Bradberry '75. Sign up early, as space is limited.

Elon 2.0: Success After Elon

2–3:15 p.m. » Studio B (Room 113), McEwen Communications Building

Alumni offer expertise to current students about finding a job, networking and how their Elon experiences enhanced their professional careers.

School of Communications Alumni Reception

3:15–4:30 p.m. » McEwen Communications Building Lobby

Reconnect with former classmates and network with the school's current students, faculty and staff.

Martha & Spencer Love School of Business Alumni Panel Discussion

4–5 p.m. » LaRose Digital Theater, Koury Business Center

Alumni share career advice and personal insights about how their Elon experiences prepared them for life after college.

Love School of Business Alumni Reception

5–6 p.m. » Burbridge Atrium, Koury Business Center

Reconnect with former classmates and network with the school's current students, faculty and staff.

The Elon Society Reception

5:30–6:30 p.m. » Maynard House

This is a special gathering for alumni who support the university at The Elon Society level. Invitations will be mailed separately. For information about how to join The Elon Society, please call Maggie Byerly at (336) 278-7459.

Instant Laughter - An Evening of Improvisation

Friday & Saturday at 7:30 p.m. » Yeager Recital Hall, Center for the Arts

Enjoy a fun-filled evening of fast-paced comedy featuring Elon's performing arts majors. A reception honoring performing arts donors will follow the Saturday evening performance in the Isabella Cannon Room. **TICKETS:** \$12 per person

National Pan-Hellenic Council Step Show

8 p.m. » McKinnon Hall, Moseley Center

See our NPHC undergraduate and alumni groups showcase their talents during the Greek Wars step show. Tickets must be purchased in advance; they will not be available at the door. **TICKETS:** \$5 per person for alumni and Greeks; \$7 per person for guests and non-Greeks

Phoenix Phest

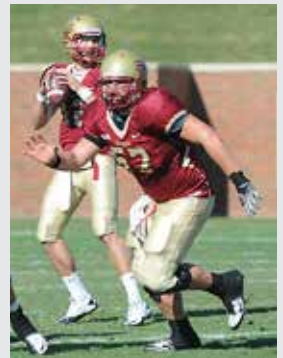
8-11 p.m. » Corner of N. O'Kelly Ave. & Moseley Center Lot; across from Koury Business Center

It's back! *All* alumni are invited to bring friends and family for an evening of live music by Groovetown, which will play everything from beach music and oldies to R&B, funk and pop. The first 100 alumni to attend will be entered into a raffle for a special Homecoming weekend prize!

Young Alumni Party

9-11 p.m. » The Fat Frogg Bar and Grill, 2009 Timberline Station Drive, Elon

Join fellow graduates from 2002-12 at The Fat Frogg to reconnect and reminisce about your Elon days. Light appetizers will be served and a cash bar will be available.



Don't miss the Elon football game on Saturday!



SATURDAY, OCT. 20

Homecoming Check-In

8 a.m.–1 p.m. » Commuter Lounge, Moseley Center

Be sure to stop by Check-In Central on Saturday to pick up your Homecoming packet, including event tickets. **NOTE:** Football tickets not picked up by the close of check-in will be available beginning at 2 p.m. at the Homecoming Will Call tent near the Alan J. White Bell Tower, **not** the stadium Will Call window.

Elon Alumni Association Awards Ceremony

9 a.m. » Whitley Auditorium

All alumni are invited to the presentation of the 2012 Alumni Association Awards, the university's premier recognition of alumni achievement. A reception will follow the ceremony. This year's recipients are Distinguished Alumnus of the Year **Christopher P. Martin '78 P'13**, Distinguished Alumna of the Year **A. Christine Baker G'88**, Young Alumnus of the Year **Michael G. Long '04** and Young Alumna of the Year **Alex Ellis '05**.

Stop Hunger Now Service Event

9–11 a.m. » East Gym

Take part in this Homecoming tradition during which we package 30,000 high-protein, dehydrated meals for people in need. Friends and family are welcome.

School of Education Alumni Gathering & Wisdom Session

10 a.m.–noon » Mooney Building

Reconnect with alumni, faculty and staff, and meet current students. Then, take part in wisdom sessions designed for teachers working in various educational sectors. Check for updates on Facebook at [Elon University School of Education Alumni](#).

School of Communications Alumni Gathering

10:30 a.m.–noon » McEwen Communications Building

Alumni are invited to reconnect with fellow alumni, faculty and staff.

Men's Basketball Alumni Game

11 a.m. » Alumni Gym, Koury Athletic Center

Cheer on players from Elon's past as they compete for bragging rights. Family and friends are welcome.

Tailgating

12:30–2:30 p.m. » Various sites on campus

Whether you're tailgating as part of a reunion or assembling your own group of alumni friends, don't miss this game-day celebration.

Elon vs. Western Carolina Football Game

3 p.m. » Rhodes Stadium

What better way to spend a crisp fall Saturday than in Rhodes Stadium with your best friends from college? The Phoenix and All-American receiver Aaron Mellette need YOUR support in this important late-season SoCon matchup. Don't forget to wear your maroon! **TICKETS:** \$20 per person; to sit with your decade or affinity group, please indicate your seating preference on the online registration form.

ORDERING DEADLINE: Oct. 12

SUNDAY, OCT. 21

Newman Center Open House

9:30–11:30 a.m. » Holland House, South Campus

Take a tour of the home of Elon's Campus Catholic Ministries, Holland House, which previously served as the home of Elon presidents.

Gospel Choir Service & Concert

10 a.m. » Whitley Auditorium

The 2012 Gospel Choir Service & Concert features guest speaker Ike Credle '83 and a showcase of dance, song and other inspirational avenues.

Alumni Worship Service

10:30 a.m. » Elon Community Church

Join fellow alumni at a special service as we honor deceased members of the Elon community.

Catholic Mass

6 and 9 p.m. » Elon Community Church

Father Gerry Waterman will celebrate two Masses for students, alumni, families and friends.

Class Reunion & Affinity Group Events

For full details about reunion and affinity events, visit elon.edu/homecoming.

Class of 2002 10th Anniversary

Young Alumni Party

Friday, Oct. 19, 9–11 p.m. » The Fat Frogg Bar & Grill, 2099 Timberline Station Drive, Elon

Class of 2002 & Young Alumni Tailgating

Saturday, Oct. 20, 12:30–2:30 p.m. » Moseley Green

TICKETS: \$15 per person, includes reunion gift

Class of 2007 Fifth Anniversary

Young Alumni Party

Friday, Oct. 19, 9–11 p.m. » The Fat Frogg Bar & Grill, 2099 Timberline Station Drive, Elon

Class of 2007 & Young Alumni Tailgating

Saturday, Oct. 20, 12:30–2:30 p.m. » Moseley Green

TICKETS: \$15 per person, includes reunion gift

Alpha Kappa Alpha 25th Anniversary

State of the Chapter Address (soror-only event)

Friday, Oct. 19, 5:30–6:30 p.m. » Oaks Commons, Room 212

Anniversary Gala

Friday, Oct. 19, 6:30–8 p.m. » Oaks Commons, Room 212

TICKETS: \$35 per person

Stop Hunger Now Service Event

Saturday, Oct. 20, 9–11 a.m. » East Gym

Tailgating with the Elon Black Alumni Network

Saturday, Oct. 20, 12:30–2:30 p.m. » Moseley Center Lot

TICKETS: \$15 per person

Black Alumni Scholarship Gala

Saturday, Oct. 20, 8 p.m.–midnight » McKinnon Hall, Moseley Center

TICKETS: \$40 per person, includes \$10 donation to scholarship fund

Farewell Reception

Sunday, Oct. 21, 9–10 a.m. » Alpha Kappa Alpha House, Loy Center

*Don't forget to purchase your 25th Anniversary Omicron Epsilon T-shirt by Oct. 1.
(XS–XL: \$12 // XXL & up: \$15)*

Alpha Omicron Pi 25th Anniversary

Hospitality and Check-in

Friday, Oct. 19, 4–7 p.m. » Best Western, Burlington

25th Anniversary Brunch

Saturday, Oct. 20, 10:30 a.m.–12:30 p.m. » McKinnon Hall, Moseley Center

TICKETS: \$20 per person

Epic Party with Lambda Chi Alpha, Sigma Pi & Sigma Chi

Saturday, Oct. 20, 8 p.m.–midnight » Ramada Inn & Conference Center, Burlington

TICKETS: \$20 per person; dressy casual attire requested

Sisterhood Ritual (sisters only)

Sunday, Oct. 21, 11 a.m. » Alpha Omicron Pi House, Loy Center

Don't forget to purchase your 25th Anniversary T-shirt by Oct. 1. (\$20 per shirt)

Alpha Pi Delta, Iota Tau Kappa, Kappa Psi Nu & Sigma Phi Beta

Fraternity Reunion Tailgating

Saturday, Oct. 20, 12:30–2:30 p.m. » Ingold Lot, Space 207

Band Alumni & Emanons 50th Anniversary

Reunion Dinner

Friday, Oct. 19, 7 p.m. » The Cutting Board, Burlington

TICKETS: pay on own

Band Room Dedication

Saturday, Oct. 20, 11 a.m. » Band Rehearsal Room, Center for the Arts

Emanons 50th Anniversary Reception

Saturday, Oct. 20, following band room dedication » Isabella Cannon Room, Center for the Arts

Department of History & Geography

Annual Alumni Gathering

Saturday, Oct. 20, 10:30–11:30 a.m. » Lindner Hall, Room 112

Department of Mathematics & Statistics

Fifth-annual Department Alumni Tailgate

Saturday, Oct. 20, 12:30–2:30 p.m. » Moseley Green

Elon Black Alumni Network

NPHC Step Show

Friday, Oct. 19, 8 p.m. » McKinnon Hall, Moseley Center

TICKETS: \$5 for alumni and Greeks; \$7 for guests and non-Greeks

Tailgating

Saturday, Oct. 20, 12:30–2:30 p.m. » Moseley Center Lot

TICKETS: \$15 per person

Black Alumni Scholarship Gala

Saturday, Oct. 20, 8 p.m.–midnight » McKinnon Hall, Moseley Center

At this year's event, we will present the first EBAN Awards. The recipients are

Frank Haith '88, Eugene Perry '69 Distinguished Alumnus Award;

L'Tanya Richmond '87, Gail Fonville Parker Distinguished Alumna Award; and

Melissa Jordan '04, Dr. K. Wilhelmina Boyd Outstanding Service to Students

Award. **TICKETS:** \$40 per person, includes \$10 donation to scholarship fund

Gospel Choir Service & Concert

Sunday, Oct. 21, 10 a.m. » Whitley Auditorium

Elon College Fellows Fifth Anniversary

Anniversary Reception

Saturday, Oct. 20, 10–11 a.m. » McMichael Science Center, Room 117

TICKETS: \$5 per person

Elon Hispanic-Latino Alumni Network

Interest Meeting

Saturday, Oct. 20, 10 a.m. » LaRose Digital Theater, Koury Business Center

Elon Periclean Scholars

Alumni Meeting

Saturday, Oct. 20, 10–11 a.m. » Moseley Center, Room 217

Homecoming Cookoff

Saturday, Oct. 20, 12:30–2:30 p.m. » Moseley Green

Elon Teaching Fellows 20th Anniversary

20th Anniversary Brunch

Saturday, Oct. 20, 10–11 a.m. » Mooney Building Front Lawn

TICKETS: \$10 per person

Kappa Alpha Order 30th Anniversary

Reunion Gathering

Friday, Oct. 19, 7 p.m. » Simply Thai, 2041 Timberline Station Drive, Elon

Tailgating

Saturday, Oct. 20, 12:30–2:30 p.m. » Corner of N. O'Kelly Ave. & Moseley Center Lot

Kappa Delta

Alumni Welcome Reception

Friday, Oct. 19, 7 p.m. » Kappa Delta House, Loy Center

Tailgating

Saturday, Oct. 20, 12:30–2:30 p.m. » Corner of N. O'Kelly Ave. & Moseley Center Lot

TICKETS: \$12 per person

Lambda Chi Alpha 20th Anniversary

Alumni Golf Tournament hosted by the Phoenix Club

Friday, Oct. 19, 11 a.m. (lunch); noon (shotgun start) » The Challenge Golf Club, Graham
TICKETS: \$75 per person (includes cart and greens fees, lunch, entry gift, beverage tickets and awards). **REGISTRATION DEADLINE:** Oct. 12

Welcome Gathering

Friday, Oct. 19, 7 p.m. » College Street Tap House (formerly The Lighthouse)

Delta Pi Zeta Alumni Association Meeting

Saturday, Oct. 20, 10 a.m. » Koury Business Center, Room 300

Campus Walking Tour

Saturday, Oct. 20, 11 a.m. » Lambda Chi Alpha House, Loy Center

20th Anniversary Tailgate

Saturday, Oct. 20, 12:30–2:30 p.m. » Between Rudd & Hunt fields

TICKETS: \$25 per person

Epic Party with Alpha Omicron Pi, Sigma Pi & Sigma Chi

Saturday, Oct. 20, 8 p.m.–midnight » Ramada Inn & Convention Center, Burlington

TICKETS: \$20 per person; dressy casual attire requested

Don't forget to purchase your 20th Anniversary Gift Package, which includes a long-sleeved T-shirt & koozie, by Oct. 1. (\$20 per person)

LGBTQIA Alumni Network

Resource Room Open House

Friday, Oct. 19, 6–8:30 p.m. » Powell House

Ribbon Cutting & Awards Ceremony

Friday, Oct. 19, 7 p.m. » LGBTQ Resource Room, Powell House

The inaugural Elon LGBT Community Enrichment Awards will be given during this ceremony. Associate Professor **Kirsten Ringelberg** and alumni **Elic Senter '99** and **Lowry Sinclair '65** will be the first recipients.

Tailgating

Saturday, Oct. 20, 12:30–2:30 p.m. » Moseley Center Lot

TICKETS: \$10 per person





Sigma Chi 25th Anniversary

Alumni Golf Tournament hosted by the Phoenix Club

Friday, Oct. 19, 11 a.m. (lunch); noon (shotgun start) » The Challenge Golf Club, Graham
TICKETS: \$75 per person (includes cart and greens fees, lunch, entry gift, beverage tickets and awards). **REGISTRATION DEADLINE:** Oct. 12

Alumni and Chapter Social

Friday, Oct. 19, 5–10 p.m. » Sandy's Steaks & Subs, 415 West Haggard Avenue, Elon

Alumni and Active Gathering

Saturday, Oct. 20, 10 a.m.–noon » Sigma Chi House, Loy Center

Tailgating

Saturday, Oct. 20, 12:30–2:30 p.m. » Corner of N. O'Kelly Ave. & Moseley Center Lot

Epic Party with Alpha Omicron Pi, Lambda Chi Alpha & Sigma Pi

Saturday, Oct. 20, 8 p.m.–midnight » Ramada Inn & Convention Center, Burlington
TICKETS: \$20 per person; dressy casual attire requested

Sigma Kappa

Welcome Reception & Ice Cream Social

Friday, Oct. 19, 7–8:30 p.m. » Sigma Kappa House, Loy Center

Tailgating

Saturday, Oct. 20, 12:30–2:30 p.m. » Harper Center Lot

Open House Breakfast

Sunday, Oct. 21, 9–11 a.m. » Sigma Kappa House, Loy Center

Sigma Phi Epsilon

Networking Event

Friday, Oct. 19, 7–9 p.m. » Isabella Cannon Room, Center for the Arts

TICKETS: \$20 per person

Tailgating

Saturday, Oct. 20, 12:30–2:30 p.m. » Corner of N. O'Kelly Ave. & Moseley Center Lot

Sigma Pi 35th Anniversary

Hospitality Suite

Friday, Oct. 19, 3 p.m.–midnight; Saturday, Oct. 20, 5 p.m.–midnight; Sunday, Oct. 21, 9–11 a.m.

» Carolina & Duke Room, Ramada Inn & Conference Center, Burlington

Alumni Golf Tournament hosted by the Phoenix Club

Friday, Oct. 19, 11 a.m. (lunch); noon (shotgun start) » The Challenge Golf Club, Graham

TICKETS: \$75 per person (includes cart and greens fees, lunch, entry gift, beverage tickets and awards). **REGISTRATION DEADLINE:** Oct. 12.

Alumni and Actives Gathering

Friday, Oct. 19, 8 p.m.–midnight » Sigma Pi House, Loy Center

Alumni Meeting

Saturday, Oct. 20, 10–11 a.m. » Carolina & Duke Room, Ramada Inn

Campus Tour

Saturday, Oct. 20, 11:30 a.m. » Fireside Lounge, Moseley Center

Tailgating

Saturday, Oct. 20, 12:30–2:30 p.m. » Between Rudd & Hunt fields

TICKETS: \$15 per person

Epic Party with Alpha Omicron Pi, Lambda Chi Alpha & Sigma Chi

Saturday, Oct. 20, 8 p.m.–midnight » Ramada Inn

TICKETS: \$20 per person; dressy casual attire requested

Sport & Event Management and School of Communications

Tailgating

Saturday, Oct. 20, 12:30–2:30 p.m. » Moseley Green



Homecoming Hotel Accommodations

Hotel	Rate	Phone
Comfort Suites Graham 769 Woody Drive (Exit 148)	\$74.95–\$84.95 + tax	(336) 221-9199
Comfort Suites Whitsett 1102 Sedalia Crossing Lane (Exit 135)	\$139 + tax (king w/ sofa bed) \$159 + tax (2 queen beds)	(336) 449-5161
Country Inn and Suites 3211 Wilson Drive (Exit 141)	\$120 + tax (king), \$130 + tax (double)	(336) 584-1115
Courtyard by Marriott 3141 Wilson Drive (Exit 141)	\$92 + tax	(336) 585-1888
Hampton Inn Burlington 2935 Saconn Drive (Exit 141)	\$149 + tax (king/double queens)	(336) 584-8585
Hampton Inn Mebane 105 Spring Forest Drive (Exit 153)	\$149 + tax	(919) 563-5400
Hampton Inn Four Seasons Greensboro 2004 Veasley Street (I-40 W, Exit 217)	\$69 + tax	(336) 854-8600
Quality Inn 2444 Maple Avenue (Exit 145)	\$79.99 + tax	(336) 229-5203
Ramada Inn 2703 Ramada Road (Exit 143)	\$63 + tax (king) \$65 + tax (double)	(336) 227-5541

Information

Check-In Central

Check-In Central is located in the Commuter Lounge in Moseley Center and will be open Friday, Oct. 19, 10 a.m.–7 p.m., and Saturday, Oct. 20, 8 a.m.–1 p.m. Alumni who wish to register on site may do so at Check-In Central during these hours. Registration packets for alumni who have pre-registered, which will include event and football tickets, should be picked up at Check-In Central; no tickets are mailed in advance of Homecoming weekend.

Football Tickets

Football tickets will not be mailed in advance of Homecoming. Please plan to pick up your tickets at Check-In Central in Moseley Center on Friday or Saturday. Tickets not picked up by 1 p.m. on Saturday will be available that day from 2 to 3 p.m. at the Homecoming Will Call tent behind the Alan J. White Bell Tower. Do not pick up tickets at the stadium Will Call window.

Get Tagged!

Drop by Check-In Central with your business card and let us turn it into a distinctive Elon luggage tag.

Johnston Hall Alumni Center

Drop by the Johnston Hall Alumni Center on Friday between 8 a.m. and 5 p.m. to take a stroll through various displays of Elon history and artifacts.

IGNITE

A gift to Elon in any amount qualifies young alumni for membership in IGNITE, Elon's giving program made just for graduates of the past decade. Your name will appear on our website and a larger-than-life 2012–13 Honor Roll of Donors posted in Moseley Center throughout Homecoming. To learn more about IGNITE, visit elon.edu/ignite or contact Jozi Snowberger '07 at jsnowberger@elon.edu.

Shuttle Service for Golden Alumni, Order of the Oak & Class of 1962

Elon's Office of Gift Planning is pleased to offer shuttle service for all members of the Order of the Oak, Elon's planned giving society, in addition to Golden Alumni and the Class of 1962.

Shuttle service will be available Friday, Oct. 19, from the Johnston Hall Alumni Center to Moseley Center from 11 a.m. to 4 p.m. On Saturday, Oct. 20, the shuttle will provide transportation from Johnston Hall to the tailgating area and stadium from 12:30 p.m. to 4 p.m. and again from the beginning of the fourth quarter through 30 minutes after the game ends. To reserve your spot on the shuttle, please call the Office of Gift Planning at (336) 278-7457.

Parking

Parking on Friday, Oct. 19, will be available in the Moseley (except for Admissions visitor spaces) and McMichael lots at no charge. Visit the Homecoming website for up-to-date information about game-day parking and tailgate spot reservations.

Special Needs

Special needs accommodations are available. For specific questions or to make arrangements for pre-paid ticket pickup, please contact the Office of Alumni Engagement at (877) 784-3566.

Volunteers Wanted

Volunteers are needed to assist with check-in and more. If you'd like to volunteer during Homecoming Weekend, please contact the Office of Alumni Engagement at (877) 784-3566 or alumni@elon.edu.

Register online at
elon.edu/homecoming
starting Sept. 17



ELON UNIVERSITY

Office of Alumni Engagement

PO Box 398, Elon NC 27244

elon.edu/homecoming

(877) 784-3566

Fax: (336) 278-7456

Nonprofit Org.
US Postage
PAID
Elon, NC
Permit No. 1