

# ELON UNIVERSITY

## FACT BOOK

### Students 2011-12

Fall Enrollment Trends .....	1	Enrollment by Major .....	14
Fall Headcount Change.....	2	State of Origin .....	17
Fall & Spring FTE .....	3	North Carolina County .....	18
Fall, Winter & Spring Enrollment .....	4	Age.....	19
Summer Enrollment.....	5	Religion .....	20
Fall Part-time Enrollment.....	6	International Students .....	21
Special Student Status .....	7	Foreign Countries.....	22
Class Standing .....	8	Institutional GPA & Grade Distribution .....	24
Undergraduate Ethnicity & Minority Composition .....	9	Average Class Size .....	25
Graduate Ethnicity & Minority Composition .....	10	Internships.....	26
Gender Composition .....	11	Volunteer Service .....	27
Students Living on Campus .....	12	Study Abroad.....	28
Student:Faculty Ratio .....	13		

## Fall Enrollment Trends

This 2011-2012 academic year was another milestone for Elon with an enrollment reaching 5,916. Approximately 7% of the private institutions in the United States of America have enrollments greater than 5,000\*.

<b>Elon University Enrollment</b>			
<u>Academic Year</u>	<u>Undergraduate</u>	<u>Graduate</u>	<u>Total</u>
1969-70	1,843	-	1,843
1970-71	1,715	-	1,715
1971-72	1,862	-	1,862
1972-73	1,873	-	1,873
1973-74	2,005	-	2,005
1974-75	2,175	-	2,175
1975-76	2,210	-	2,210
1976-77	2,150	-	2,150
1977-78	2,295	-	2,295
1978-79	2,356	-	2,356
1979-80	2,501	-	2,501
1980-81	2,577	-	2,577
1981-82	2,580	-	2,580
1982-83	2,625	-	2,625
1983-84	2,715	-	2,715
1984-85	2,764	30	2,794
1985-86	2,869	60	2,929
1986-87	2,967	130	3,097
1987-88	3,079	146	3,225
1988-89	3,197	117	3,314
1989-90	3,205	163	3,368
1990-91	3,140	123	3,263
1991-92	3,083	138	3,221
1992-93	3,082	145	3,227
1993-94	3,141	138	3,279
1994-95	3,316	180	3,496
1995-96	3,323	156	3,479
1996-97	3,427	161	3,588
1997-98	3,533	152	3,685
1998-99	3,641	204	3,845
1999-00	3,701	260	3,961
2000-01	3,900	238	4,138
2001-02	4,160	181	4,341
2002-03	4,270	162	4,432
2003-04	4,431	153	4,584
2004-05	4,622	174	4,796
2005-06	4,702	254	4,956
2006-07	4,849	381	5,230
2007-08	4,939	517	5,456
2008-09	4,992	636	5,628
2009-10	4,995	671	5,666
2010-11	5,032	677	5,709
2011-12	5,225	691	5,916

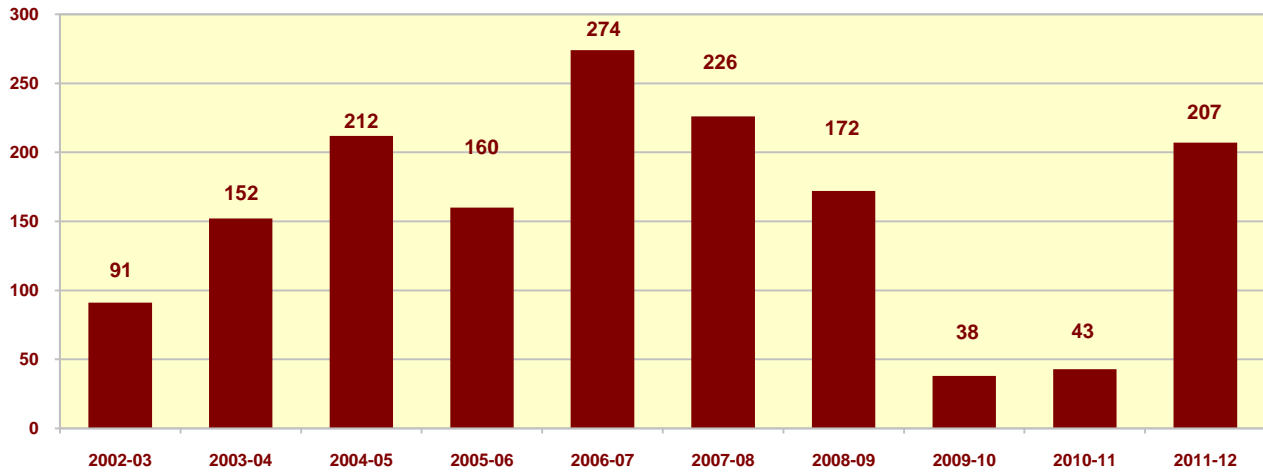
SOURCE: Registrar

\* The Chronicle of Higher Education 2008-9 Almanac

## Fall Headcount Change

The student headcount rose by 207 in 2011-12. Since 2001-02, total headcount has increased by 32%.

*Fall Headcount Change*

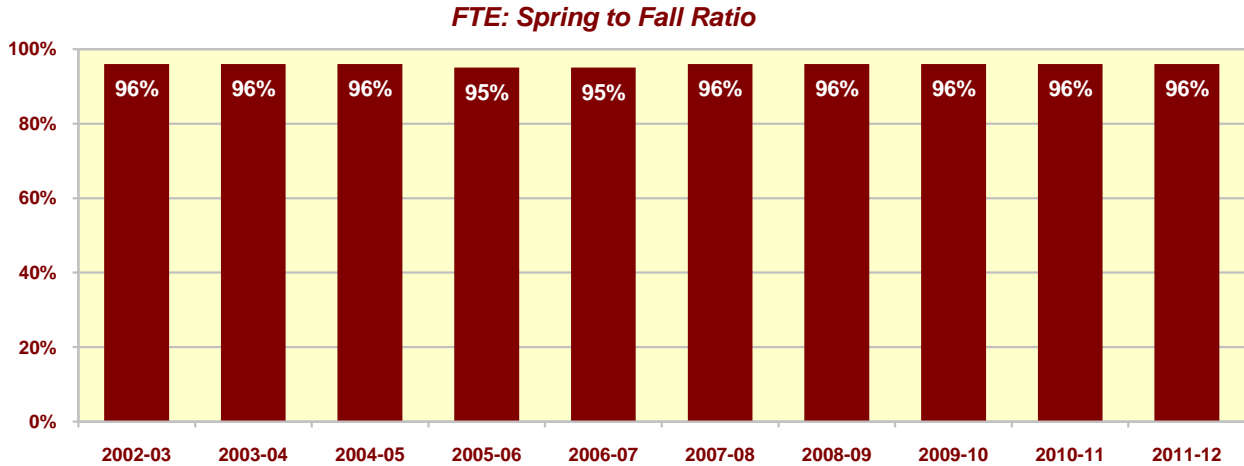


<b>Elon University</b>		
<u>Academic Year</u>	<u>Total</u>	<u>Change</u>
1990-91	3,263	-
1991-92	3,221	-42
1992-93	3,227	6
1993-94	3,279	52
1994-95	3,496	217
1995-96	3,479	-17
1996-97	3,588	109
1997-98	3,685	97
1998-99	3,845	160
1999-00	3,961	116
2000-01	4,138	177
2001-02	4,341	203
2002-03	4,432	91
2003-04	4,584	152
2004-05	4,796	212
2005-06	4,956	160
2006-07	5,230	274
2007-08	5,456	226
2008-09	5,628	172
2009-10	5,666	38
2010-11	5,709	43
2011-12	5,916	207

SOURCE: Registrar

## Fall & Spring FTE

The number of fall FTE students rose to 5,789 in 2011-12. The FTE has risen for nineteen consecutive years. The graph below indicates spring FTE as a percent to fall FTE. This ratio has a positive correlation to institutional retention, which indicates the higher this ratio, typically the higher the retention rate.



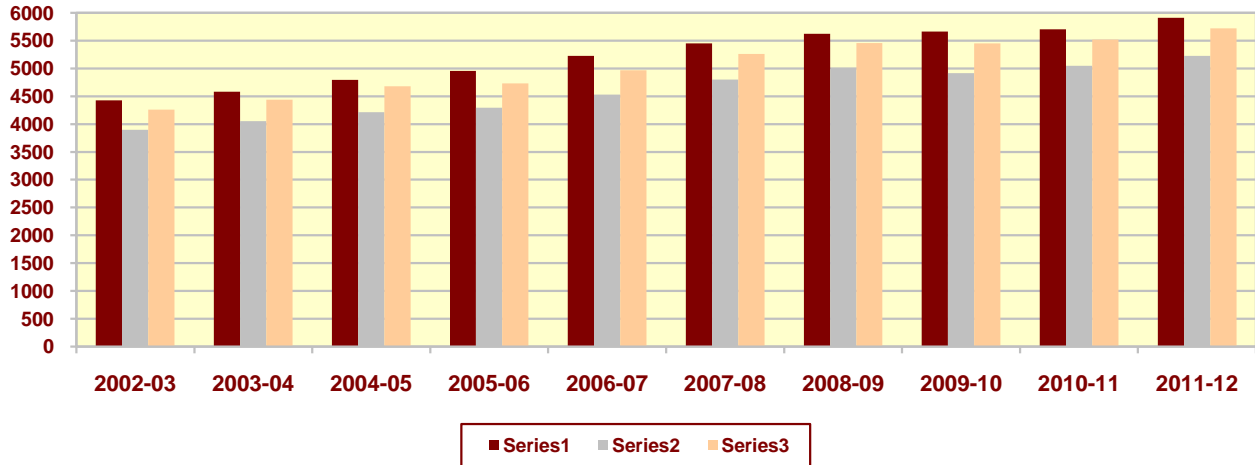
<b>Elon University</b>			
<u>Academic Year</u>	<u>Fall FTE</u>	<u>Spring FTE</u>	<u>Change</u>
1990-91	3,019	2,824	195
1991-92	3,016	2,825	191
1992-93	3,039	2,829	210
1993-94	3,102	2,876	226
1994-95	3,304	3,101	203
1995-96	3,319	3,087	232
1996-97	3,416	3,186	230
1997-98	3,536	3,412	124
1998-99	3,713	3,554	159
1999-00	3,819	3,618	201
2000-01	4,004	3,848	156
2001-02	4,233	4,060	173
2002-03	4,313	4,119	194
2003-04	4,462	4,300	162
2004-05	4,668	4,501	167
2005-06	4,829	4,591	238
2006-07	5,087	4,854	233
2007-08	5,314	5,119	195
2008-09	5,491	5,285	206
2009-10	5,527	5,284	243
2010-11	5,567	5,348	219
2011-12	5,789	5,541	248

SOURCE: Registrar

## Fall, Winter & Spring Enrollment

Historically, fall enrollment is higher than spring which is higher than winter. Spring as a ratio of fall is an indicator of retention. The closer this ratio is to 100%, the higher the retention rate.

*Fall, Winter & Spring Enrollment*



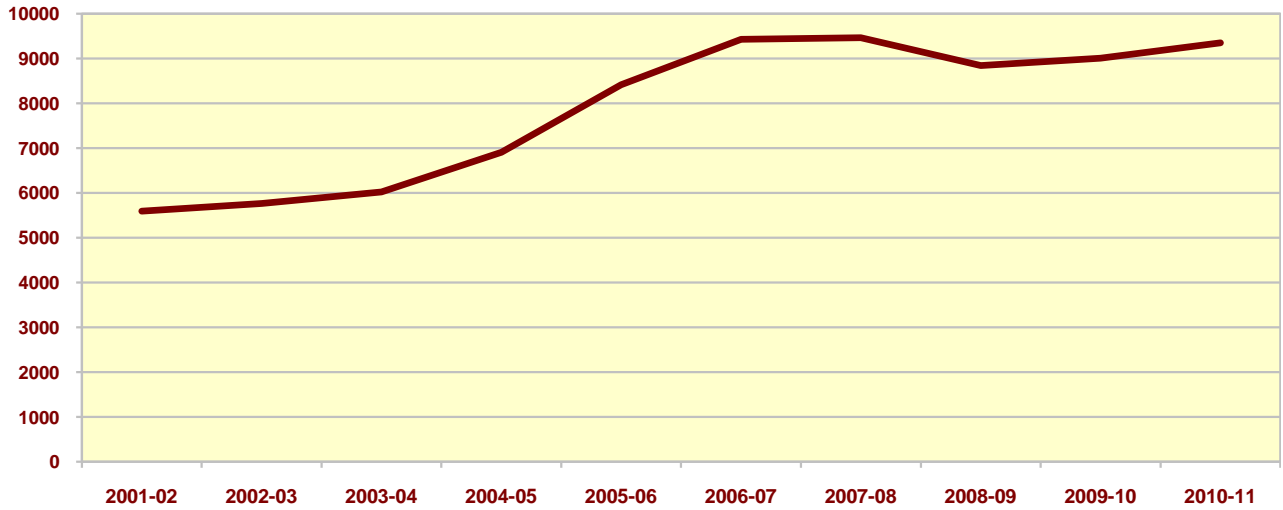
<b>Elon University</b>					
<u>Academic Year</u>	<u>Fall</u>	<u>Winter</u>	<u>Spring</u>	<u>Winter (% of Fall)</u>	<u>Spring (% of Fall)</u>
1991-92	3,221	2,466	3,040	76.6%	94.4%
1992-93	3,227	2,452	3,050	76.0%	94.5%
1993-94	3,279	2,487	3,069	75.8%	93.6%
1994-95	3,496	2,669	3,283	76.3%	92.8%
1995-96	3,479	2,673	3,259	76.3%	93.7%
1996-97	3,588	2,784	3,370	77.6%	93.8%
1997-98	3,685	3,139	3,583	85.2%	97.2%
1998-99	3,845	3,296	3,711	85.7%	96.5%
1999-00	3,961	3,439	3,799	86.8%	95.9%
2000-01	4,138	3,621	3,987	87.5%	96.3%
2001-02	4,341	3,784	4,199	87.2%	96.7%
2002-03	4,432	3,903	4,262	88.0%	96.2%
2003-04	4,584	4,056	4,442	88.5%	96.7%
2004-05	4,796	4,215	4,682	87.9%	97.6%
2005-06	4,956	4,297	4,732	86.7%	95.5%
2006-07	5,230	4,531	4,969	86.6%	95.0%
2007-08	5,456	4,806	5,262	88.1%	96.4%
2008-09	5,628	4,995	5,460	88.8%	97.0%
2009-10	5,666	4,919	5,455	86.8%	96.3%
2010-11	5,709	5,050	5,524	88.5%	96.1%
2011-12	5,916	5,228	5,726	88.3%	96.8%

SOURCE: Registrar

## Summer Enrollment

In summer of 2010-11 credit hours generated increased to 9,354.

*Summer Credit Hours*



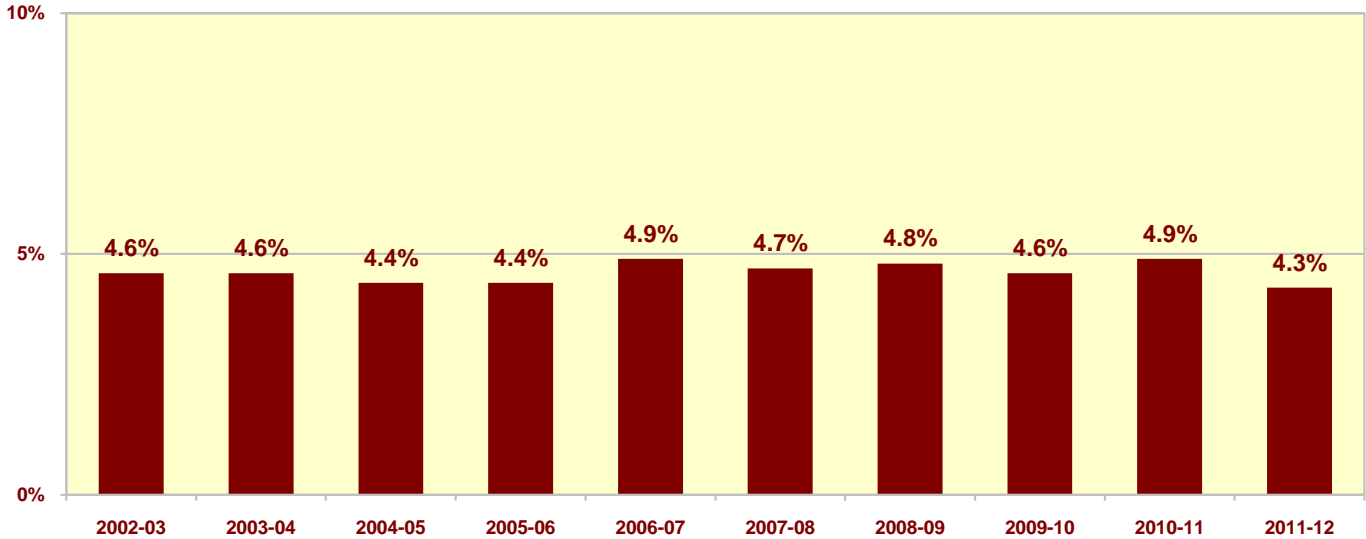
<b>Elon University</b>	
<u>Academic Year</u>	<u>Summer Hours</u>
1990-91	5,756
1991-92	5,274
1992-93	4,842
1993-94	4,674
1994-95	3,656
1995-96	2,815
1996-97	3,325
1997-98	5,100
1998-99	6,023
1999-00	5,719
2000-01	5,222
2001-02	5,592
2002-03	5,762
2003-04	6,020
2004-05	6,906
2005-06	8,418
2006-07	9,430
2007-08	9,465
2008-09	8,845
2009-10	9,005
2010-11	9,354

SOURCE: Registrar

## Fall: Part-time Enrollment

In 2011-12 part-time enrollment at Elon was 4.3%; it remains well below the national average for part-time enrollment at 4-year colleges, which is approximately 20%.\*

*Part-time Students*



<b>Elon University</b>						
<u>Academic Year</u>	<b>PT Undergraduates</b>	<b>PT Graduates</b>	<b>Total</b>	<b>% Of Undergraduates</b>	<b>% Of Graduates</b>	<b>% Of All Students</b>
1992-93	230	132	362	7.5%	91.0%	11.2%
1993-94	208	126	334	6.6%	91.3%	10.2%
1994-95	201	171	372	6.1%	95.0%	10.6%
1995-96	184	142	326	5.5%	91.0%	9.4%
1996-97	175	150	325	5.1%	93.2%	9.1%
1997-98	154	128	282	4.4%	84.2%	7.7%
1998-99	117	131	248	3.2%	64.2%	6.4%
1999-00	121	134	255	3.3%	51.5%	6.4%
2000-01	113	124	237	2.9%	52.1%	5.7%
2001-02	98	97	195	2.4%	53.6%	4.5%
2002-03	105	100	205	2.5%	61.7%	4.6%
2003-04	122	88	210	2.8%	57.5%	4.6%
2004-05	126	86	212	2.7%	49.4%	4.4%
2005-06	95	125	220	2.0%	49.2%	4.4%
2006-07	108	146	254	2.2%	39.1%	4.9%
2007-08	107	149	256	2.2%	28.8%	4.7%
2008-09	106	163	269	2.1%	25.6%	4.8%
2009-10	122	141	263	2.4%	21.0%	4.6%
2010-11	139	139	278	2.8%	20.5%	4.9%
2011-12	122	131	253	2.3%	19.0%	4.3%

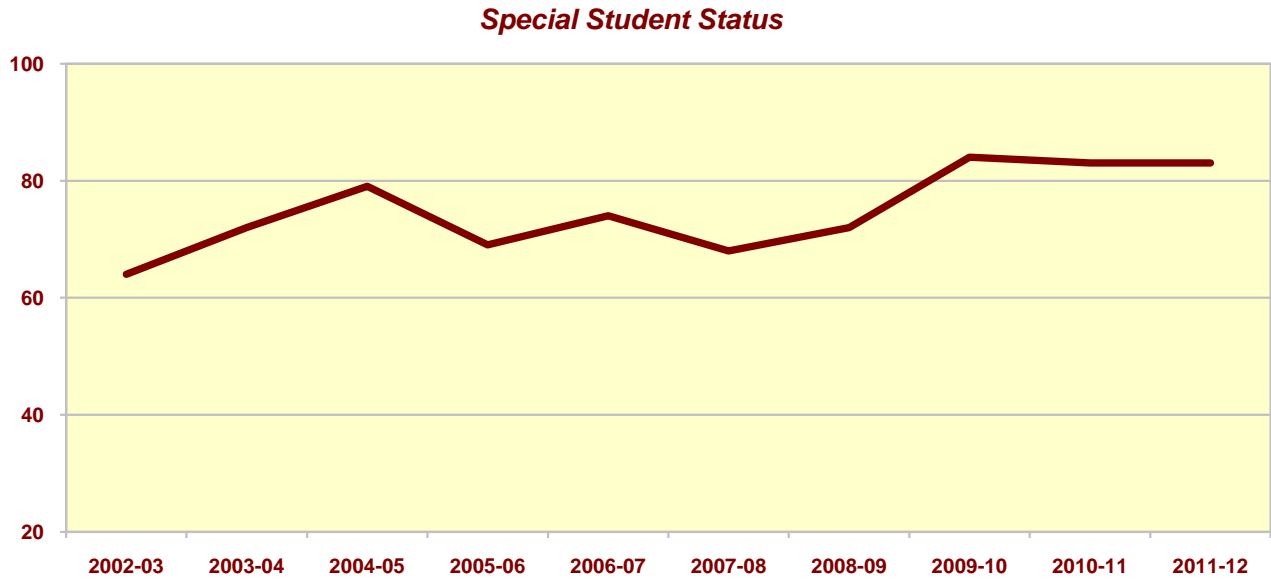
*(Part Time: an undergraduate student taking 11 or fewer hours/ a graduate student taking 8 or fewer hours)*

\* The Chronicle of Higher Education 2008-9 Almanac

SOURCE: Registrar

## Special Student Status

In 2011-12 the number of undergraduates admitted under "special status" remained unchanged at 83.



<b>Elon University</b>						
Academic Year	Special Undergraduates	Special Graduates	Total	% Of Undergraduates	% Of Graduates	% Of All Students
1992-93	75	39	114	2.43%	26.90%	3.53%
1993-94	66	37	103	2.10%	26.81%	3.14%
1994-95	56	44	100	1.69%	24.44%	2.86%
1995-96	61	38	99	1.84%	24.36%	2.85%
1996-97	48	52	100	1.40%	32.30%	2.79%
1997-98	52	64	116	1.47%	42.11%	3.15%
1998-99	40	58	98	1.10%	28.43%	2.55%
1999-00	57	65	122	1.54%	25.00%	3.08%
2000-01	56	-	56	1.44%	-	1.35%
2001-02	67	-	67	1.61%	-	1.54%
2002-03	64	-	64	1.50%	-	1.44%
2003-04	72	-	72	1.62%	-	1.57%
2004-05	79	-	79	1.71%	-	1.65%
2005-06	69	-	69	1.47%	-	1.39%
2006-07	74	-	74	1.53%	-	1.41%
2007-08	68	-	68	1.38%	-	1.24%
2008-09	72	-	72	1.44%	-	1.27%
2009-10	84	-	84	1.68%	-	1.48%
2010-11	83	-	83	1.65%	-	1.45%
2011-12	83	-	83	1.59%	-	1.40%

(NOTE: Special student status is given to a student NOT seeking a degree at Elon)

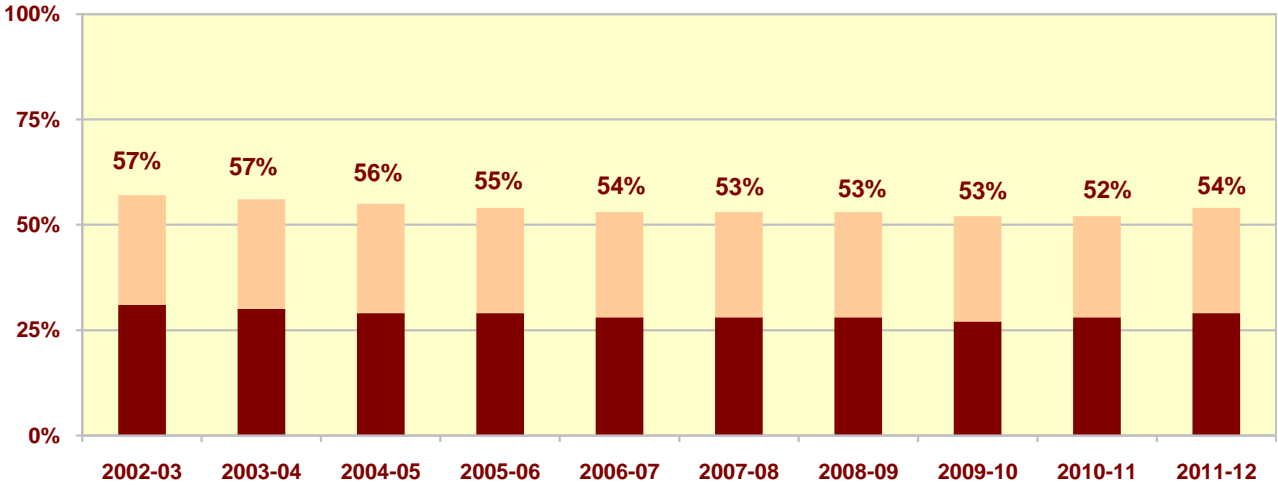
SOURCE: Registrar



## Class Standing

The 1<sup>st</sup> Year student and sophomore ratio of the undergraduate population increased to 54%.

*1<sup>st</sup> Year & Sophomore Ratio*



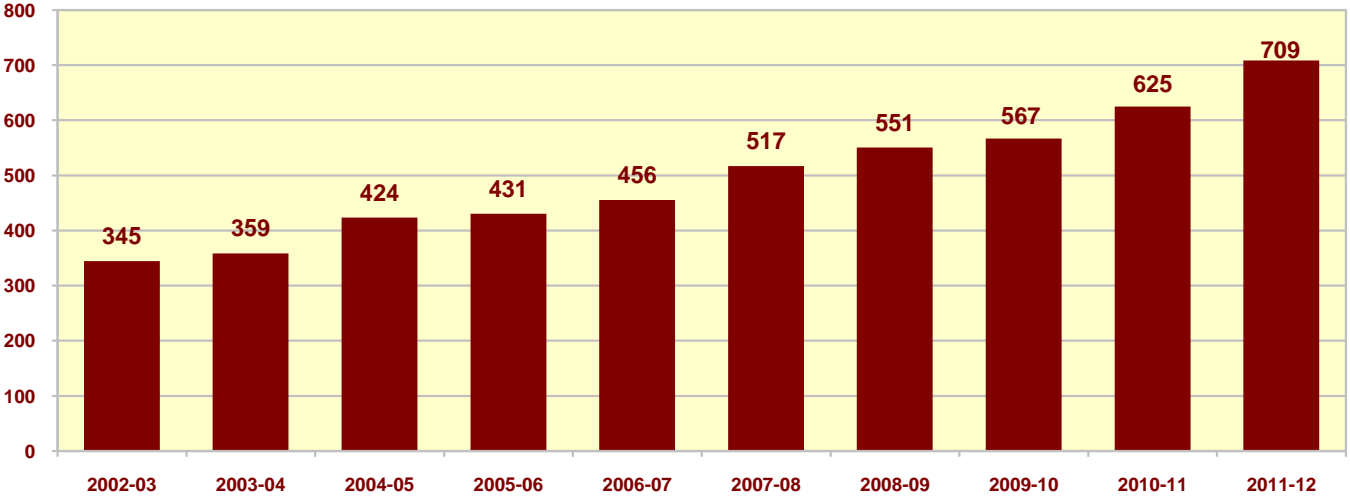
<b>Elon University</b>				
<u>Academic Year</u>	<b>1<sup>st</sup> Year</b>	<b>Sophomores</b>	<b>Juniors</b>	<b>Seniors</b>
1992-93	32%	28%	20%	20%
1993-94	32%	29%	22%	17%
1994-95	32%	27%	22%	19%
1995-96	31%	29%	21%	19%
1996-97	31%	28%	23%	19%
1997-98	30%	26%	23%	20%
1998-99	30%	26%	22%	21%
1999-00	31%	26%	22%	21%
2000-01	32%	25%	23%	20%
2001-02	32%	25%	22%	21%
2002-03	31%	26%	22%	21%
2003-04	30%	26%	23%	21%
2004-05	29%	26%	23%	22%
2005-06	29%	25%	23%	23%
2006-07	28%	25%	24%	23%
2007-08	28%	25%	24%	23%
2008-09	28%	25%	24%	23%
2009-10	27%	25%	23%	25%
2010-11	28%	24%	23%	25%
2011-12	29%	25%	22%	24%

SOURCE: Registrar

## Undergraduate Ethnicity & Minority Composition

The 2011-12 undergraduate minority headcount increased from 625 to 709. This minority component is predominately African American, or 6.5% of all undergraduates.

*Minority Undergraduate Students*



SOURCE: IPEDS, Fall Enrollment

<b>Elon University</b>		
<u>Academic Year</u>	<u>Minority Undergraduates*</u>	<u>Percent</u>
1991-92	203	6.6%
1992-93	233	7.6%
1993-94	246	7.8%
1994-95	239	7.2%
1995-96	258	7.8%
1996-97	262	7.7%
1997-98	270	7.6%
1998-99	294	8.1%
1999-00	315	8.5%
2000-01	304	7.8%
2001-02	332	8.0%
2002-03	345	8.1%
2003-04	359	8.1%
2004-05	424	9.2%
2005-06	431	9.2%
2006-07	456	9.4%
2007-08	517	10.5%
2008-09	551	11.0%
2009-10	567	11.4%
2010-11	625	12.4%
2011-12	709	13.6%

Ethnicity composition is shown in the table below.

<b>Elon University</b>		
<u>Ethnicity</u>	<u>UG 2010-11</u>	<u>Percent</u>
Asian Am.	89	1.7%
African Am.	339	6.5%
Hispanic Am.	191	3.7%
Am. Indian	13	0.2%
International	71	1.4%
Multi Racial	73	1.4%
Hawaiian / Pacific Is.	4	0.1%
Unknown	226	4.3%
White	4,219	80.7%
<b>TOTAL</b>	<b>5,225</b>	<b>**100%</b>

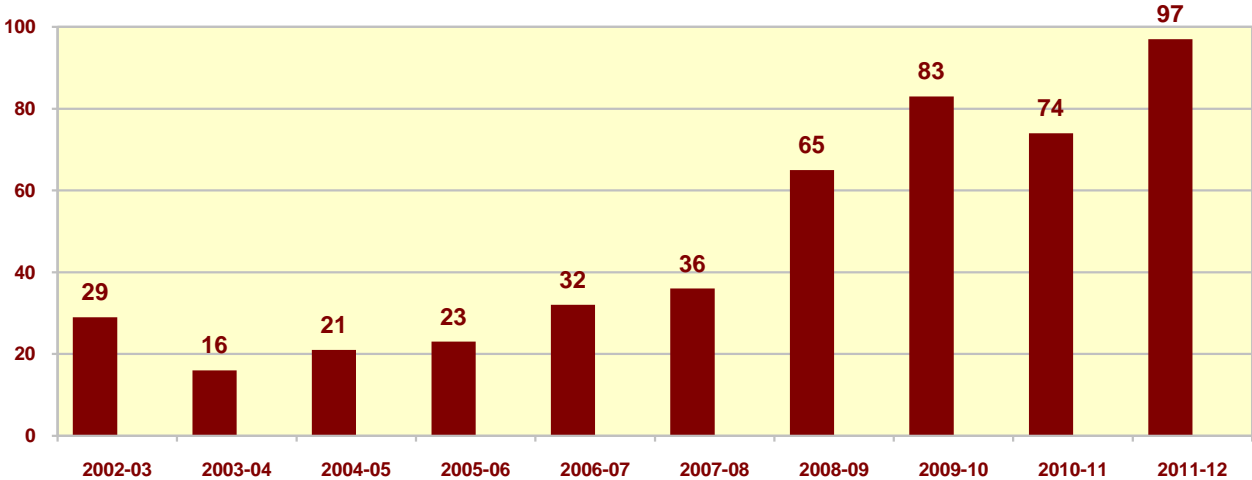
\*Students classified as international, white, and unknown are not included in these figures

\*\* may not sum to 100% due to rounding

## Graduate Ethnicity & Minority Composition

The 2011-12 graduate minority headcount increased from 74 to 97. The minority component is predominately African American, or 8.0% of all graduate students.

*Minority Graduate Students*



SOURCE: IPEDS, Fall Enrollment

<b>Elon University</b>		
<b>Academic Year</b>	<b>Minority Graduates*</b>	<b>Percent</b>
1991-92	11	8.0%
1992-93	7	4.8%
1993-94	9	6.5%
1994-95	11	6.1%
1995-96	11	7.1%
1996-97	15	9.3%
1997-98	18	11.8%
1998-99	22	10.8%
1999-00	22	8.5%
2000-01	20	8.4%
2001-02	22	12.2%
2002-03	29	17.9%
2003-04	16	10.5%
2004-05	21	12.1%
2005-06	23	9.1%
2006-07	32	8.4%
2007-08	36	7.0%
2008-09	65	10.2%
2009-10	83	12.4%
2010-11	74	10.9%
2011-12	97	14.0%

Ethnicity composition is shown in the table below.

<b>Elon University</b>		
<b>Ethnicity</b>	<b>Graduates 2010-11</b>	<b>Percent</b>
Asian Am.	23	3.3%
African Am.	55	8.0%
Hispanic Am.	11	1.6%
Am. Indian	8	1.2%
International	0	0.0%
Multi-Racial	0	0.0%
Hawaiian / Pacific Is.	0	0.0%
Unknown	54	7.8%
White	540	78.1%
<b>TOTAL</b>	<b>691</b>	<b>**100%</b>

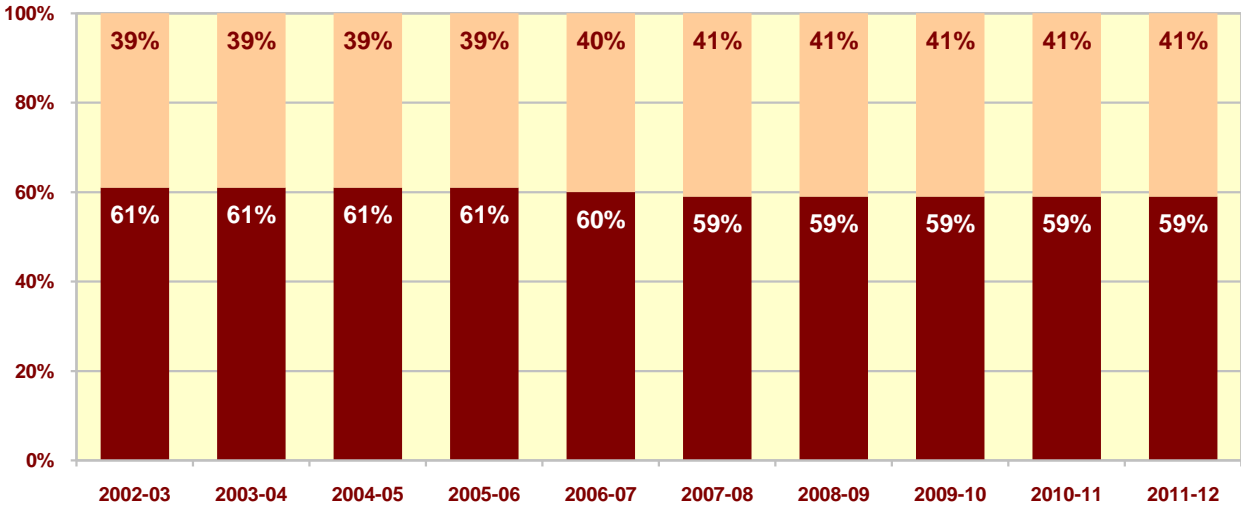
\*Students classified as international, white, and unknown are not included in these figures

\*\* may not sum to 100% due to rounding

## Undergraduate Gender Composition

The undergraduate male ratio at Elon was 41%. Nationally, the male ratio is approximately 43%\*.

*Gender Ratios*



■ Series1   ■ Series2

<b>Elon University</b>		
<u>Academic Year</u>	<u>Female</u>	<u>Male</u>
1991-92	53%	47%
1992-93	55%	45%
1993-94	55%	45%
1994-95	55%	45%
1995-96	56%	44%
1996-97	57%	43%
1997-98	58%	42%
1998-99	60%	40%
1999-00	60%	40%
2000-01	61%	39%
2001-02	61%	39%
2002-03	61%	39%
2003-04	61%	39%
2004-05	61%	39%
2005-06	61%	39%
2006-07	60%	40%
2007-08	59%	41%
2008-09	59%	41%
2009-10	59%	41%
2010-11	59%	41%
2011-12	59%	41%

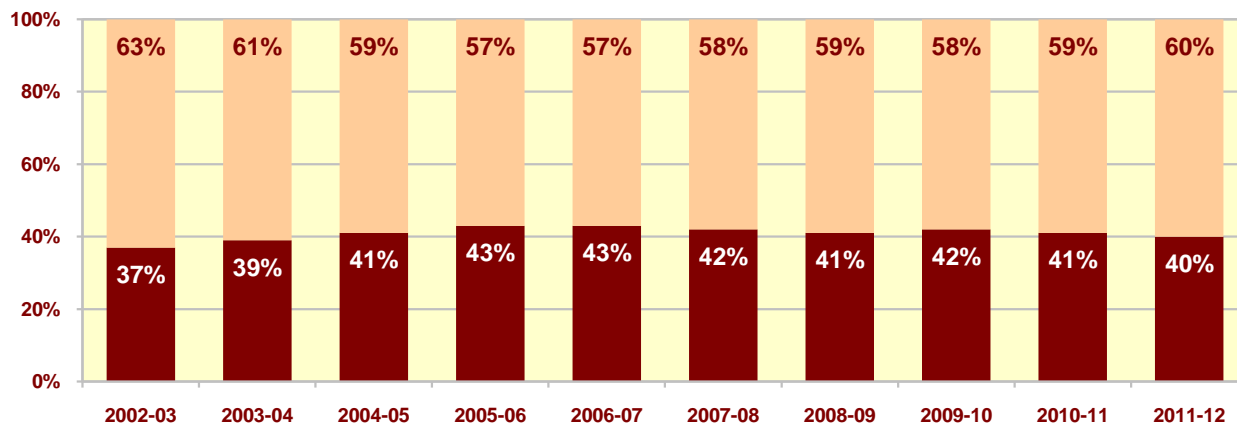
SOURCE: Registrar

\* The Chronicle of Higher Education 2009-10 Almanac

## Students Living on Campus

In 2011-12 the number of undergraduates living on campus increased slightly from 59% to 60%. Nationally, approximately 15% of students live on-campus\*

*Undergraduates Living On/Off Campus*



<b>Elon University</b>			
<b>Academic Year</b>	<b>Percent Living On-Campus</b>	<b>Number Living On-Campus</b>	<b>Total Undergraduates</b>
1991-92	56%	1,735	3,083
1992-93	58%	1,780	3,082
1993-94	58%	1,812	3,141
1994-95	56%	1,852	3,316
1995-96	54%	1,811	3,323
1996-97	54%	1,862	3,427
1997-98	54%	1,908	3,533
1998-99	54%	1,961	3,641
1999-00	63%	2,335	3,701
2000-01	64%	2,507	3,900
2001-02	63%	2,631	4,160
2002-03	63%	2,702	4,270
2003-04	61%	2,724	4,431
2004-05	59%	2,711	4,622
2005-06	57%	2,668	4,702
2006-07	57%	2,779	4,849
2007-08	58%	2,863	4,939
2008-09	59%	2,941	4,992
2009-10	58%	2,910	4,995
2010-11	59%	2,969	5,032
2011-12	60%	3,158	5,225

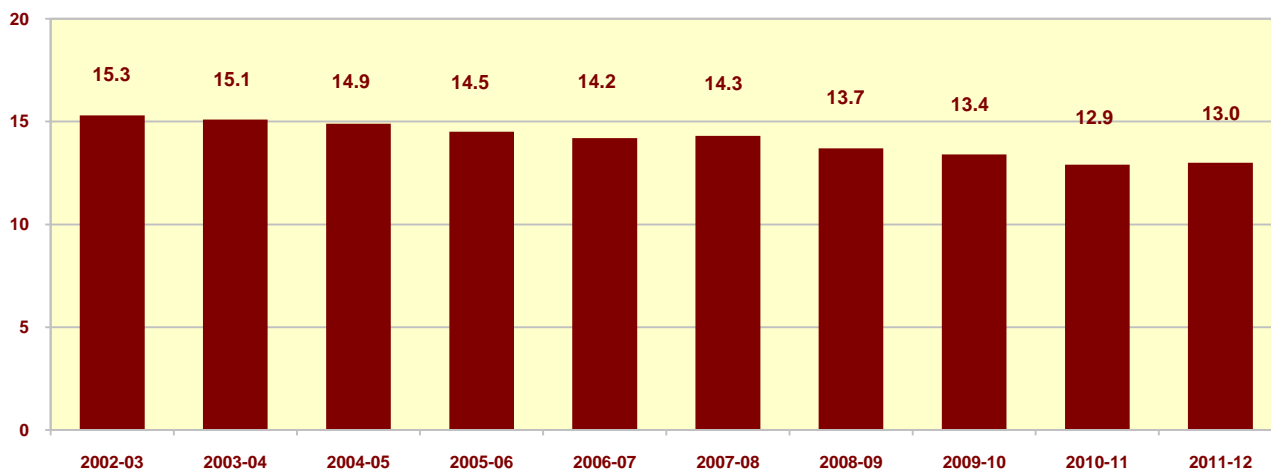
SOURCE: Registrar

\* The Chronicle of Higher Education 2009-10 Almanac

## Student : Faculty Ratio

The student-faculty ratio (full time equivalent (FTE) students to one FTE faculty) indicates an overall decreasing trend. In the 2011-12 academic year, that figure increased from 12.9 to 13.0 students to one FTE faculty.

*FTE Students:1 FTE Faculty*



<b>Elon University</b>	
<u>Academic Year</u>	<u>FTE Students Per FTE Faculty</u>
1992-93	17.6
1993-94	17.5
1994-95	17.7
1995-96	17.1
1996-97	17.3
1997-98	17.2
1998-99	16.4
1999-00	16.3
2000-01	15.8
2001-02	15.8
2002-03	15.3
2003-04	15.1
2004-05	14.9
2005-06	14.5
2006-07	14.2
2007-08	14.3
2008-09	13.7
2009-10	13.4
2010-11	12.9
2011-12	13.0

SOURCE: Institutional Research

## Enrollment by Major

The 10 most popular majors in Fall 2011-12 at Elon are:

<u>Major</u>	<u>Enrollment</u>
<b>Exercise Science</b>	<b>206</b>
<b>Political Science</b>	<b>216</b>
<b>International Studies</b>	<b>220</b>
<b>Business Administration</b>	<b>223</b>
<b>Marketing</b>	<b>233</b>
<b>Finance</b>	<b>234</b>
<b>Biology</b>	<b>239</b>
<b>Media Arts &amp; Entertainment</b>	<b>293</b>
<b>Psychology</b>	<b>363</b>
<b>Strategic Communications</b>	<b>386</b>

Majors	2002-03	2003-04	2004-05	2005-06	2006-07	2007-08	2008-09	2009-10	2010-11	2011-12
Accounting	89	103	109	130	136	151	153	168	174	154
Anthropology	-	-	-	-	-	8	19	21	33	39
Applied Mathematics	-	-	-	-	-	-	-	-	-	4
Art	82	87	71	69	64	53	48	59	54	51
Art History	-	-	-	-	-	1	14	16	22	19
Arts Administration	-	-	-	-	-	-	-	-	-	2
Athletic Training*	18	30	34	45	33	23	14	6	-	-
Biology	192	206	217	215	226	267	248	227	241	239
Biochemistry	-	-	-	-	-	-	3	42	59	58
Business Adm	727	707	726	762	808	849	911	879	577	223
Chemistry	26	30	39	47	53	53	67	48	28	27
Communications	754	745	746	692	719	722	718	196	74	32
Communication Science <sup>&amp;</sup>	-	-	-	-	-	-	-	48	36	18
Compu. Info Sys*	9	36	27	23	23	38	34	23	24	27
Computer Sci.	56	41	40	38	39	32	29	30	44	37
Dance*	4	18	28	39	54	50	46	25	26	-
Dance Performance / Choreography <sup>&amp;</sup>	-	-	-	-	-	-	-	18	10	46
Economics	39	38	40	38	46	77	84	94	105	86
Elementary Ed	266	274	241	224	220	215	213	190	171	180
Engineering	49	60	55	47	52	58	48	43	45	63

<b>Majors</b>	<b>2002-03</b>	<b>2003-04</b>	<b>2004-05</b>	<b>2005-06</b>	<b>2006-07</b>	<b>2007-08</b>	<b>2008-09</b>	<b>2009-10</b>	<b>2010-11</b>	<b>2011-12</b>
<b>Entrepreneurship</b>	-	-	-	-	-	-	-	-	24	104
<b>English</b>	103	111	116	142	140	128	145	151	155	164
<b>Environmental Studies</b>	32	30	21	28	44	58	69	71	79	81
<b>Environmental &amp; Ecological Stds</b>	-	-	-	-	-	-	-	-	4	15
<b>Exercise/Sport Science*</b>	43	107	160	183	176	189	189	201	191	206
<b>Finance</b>	-	-	-	-	-	-	-	-	106	234
<b>French</b>	12	8	11	7	4	11	21	12	12	13
<b>Health Ed.</b>	5	3	5	6	3	-	-	-	-	-
<b>History</b>	95	101	105	115	137	123	130	105	124	116
<b>Human Service Studies</b>	105	100	121	111	114	103	81	91	89	100
<b>Independent</b>	0	2	2	1	3	1	3	8	6	4
<b>Information Science</b>										8
<b>International Business</b>										33
<b>International Studies</b>	84	98	123	141	162	188	200	216	225	220
<b>Journalism</b>	102	90	100	122	149	137	136	152	161	187
<b>Mathematics</b>	53	39	37	34	38	54	73	75	52	63
<b>Media Arts &amp; Entertainment</b>	-	-	-	-	-	-	3	206	256	293
<b>Medical Tech.</b>	6	1	2	5	8	2	2	0	2	4
<b>Middle Grade Ed.</b>	16	24	22	25	26	24	31	26	31	25
<b>Music</b>	17	17	22	20	35	29	24	19	20	16
<b>Management</b>	-	-	-	-	-	-	-	-	53	151
<b>Marketing</b>	-	-	-	-	-	-	-	-	90	233
<b>Music Education</b>	31	30	28	29	22	25	29	22	24	16
<b>Music Perf.</b>	14	14	14	18	15	17	14	23	19	21
<b>Music Tech.</b>	-	-	-	-	-	3	14	22	32	26
<b>Music Theatre</b>	74	82	74	74	77	88	102	94	89	104
<b>Philosophy</b>	21	24	28	37	27	24	31	31	29	31
<b>Physical Ed.</b>	30	26	27	21	19	6	3	-	-	-
<b>Physical Ed. &amp; Health</b>	-	-	-	-	2	15	16	13	10	11
<b>Physics</b>	11	12	12	17	21	15	16	18	9	21
<b>Political Science</b>	136	143	170	170	178	197	178	189	213	216
<b>Psychology</b>	199	246	275	251	228	224	235	258	278	363
<b>Public Adm</b>	20	27	32	28	23	27	27	24	28	25
<b>Religious St.</b>	25	31	36	38	31	30	27	31	29	22
<b>Science Ed.</b>	10	7	12	14	9	11	11	9	11	6
<b>Social Science</b>	-	-	-	-	-	-	-	-	-	-
<b>Social Science Ed.</b>	8	7	9	6	1	-	-	-	-	-



Majors	2002-03	2003-04	2004-05	2005-06	2006-07	2007-08	2008-09	2009-10	2010-11	2011-12
Sociology	49	72	52	41	56	53	41	40	34	38
Spanish	29	42	41	49	45	45	65	47	38	28
Special Ed.	57	57	41	32	33	37	40	33	38	47
Sport & Event Mgmt	84	89	115	129	125	107	107	125	122	132
Sports Medicine	130	58	27	1	1	-	-	-	-	-
Theatre Art	47	52	61	69	67	65	64	50	50	51
Theatre Design and Production	0	0	3	7	14	11	11	16	15	18
Theatre Studies	-	-	-	-	-	13	13	24	18	22
Strategic Communication	-	-	-	-	-	-	7	287	366	386
Statistics	-	-	-	-	-	-	-	-	11	24
Other	65	73	79	69	74	68	72	85	83	83
Undecided	576	564	598	612	585	588	542	524	578	476
Graduate (MBA)	89	82	75	84	104	118	127	124	116	120
Graduate (M.Ed)	26	21	18	56	45	68	82	80	68	47
Graduate (MPT)#	47	23	-	-	-	-	-	-	-	-
Graduate (iMed) <sup>&amp;</sup>	-	-	-	-	-	-	-	37	37	41
Graduate (DPT) <sup>+</sup>	-	27	81	114	117	116	116	114	114	115
Graduate (LAW)	-	-	-	-	115	215	311	316	342	368
Undergraduate	4,600	4,762	4,954	5,021	5,165	5,313	5,421	5,431	5,527	5,742
Graduate	162	153	174	254	381	517	636	671	677	691
<b>TOTAL</b>	<b>4,762</b>	<b>4,915</b>	<b>5,128</b>	<b>5,275</b>	<b>5,546</b>	<b>5,830</b>	<b>6,057</b>	<b>6,102</b>	<b>6,204</b>	<b>6,433</b>

\* New major in 2002-03

+ New program in 2003-04

# Program ended Spring 2003-04

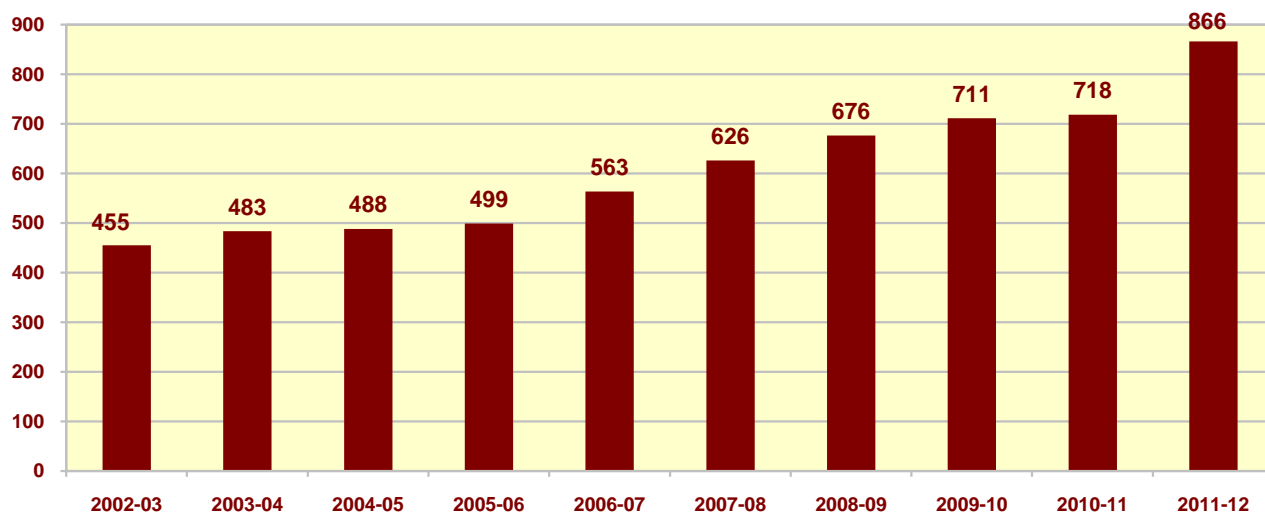
&New Program in 2009-10

SOURCE: Registrar (double and triple majors included)

## State of Origin

**Besides North Carolina, Elon draws most of its students from Maryland, Massachusetts, and Virginia. In all, Elon students represent 48 states and the District of Columbia. In the 2011-12 academic year, "Other States" enrollment increased from 718 to 866. Approximately 33% of all Elon students (undergraduate and graduate) are from North Carolina; nationally approximately 88% of students attend college in their home state\*.**

*"Other" States Enrollment*



State	CT	DE	FL	GA	MD	MA	NJ	NY	NC	OH	PA	SC	VA	WV	Other
1994-95	107	68	158	90	384	68	322	113	1,239	52	153	30	505	27	180
1995-96	122	72	159	84	424	83	348	137	1,092	61	154	30	492	36	185
1996-97	139	74	182	98	442	92	339	150	1,076	81	153	35	477	45	205
1997-98	138	80	174	112	485	110	309	161	1,047	94	183	44	464	46	238
1998-99	131	78	183	128	489	129	264	145	1,091	121	209	58	500	48	271
1999-00	118	61	172	143	508	123	234	137	1,182	132	208	73	498	43	329
2000-01	112	54	199	156	541	122	190	119	1,266	152	238	75	485	38	391
2001-02	124	46	206	178	537	159	207	101	1,306	176	264	85	498	35	419
2002-03	124	50	195	184	530	155	231	111	1,373	183	259	81	465	36	455
2003-04	126	52	221	193	542	158	232	111	1,447	211	246	76	447	39	483
2004-05	153	47	223	196	593	192	262	115	1,461	218	268	79	463	38	488
2005-06	168	44	234	184	559	202	281	126	1,577	238	306	79	420	39	499
2006-07	176	37	250	181	556	226	288	128	1,729	226	320	86	428	36	563
2007-08	182	33	247	186	521	294	314	165	1,806	201	323	77	437	44	626
2008-09	191	28	219	178	483	322	314	177	1,978	185	325	73	442	37	676
2009-10	201	33	215	172	454	363	369	196	1,969	150	302	79	421	31	711
2010-11	239	28	221	160	420	402	397	220	1,979	143	291	70	401	20	718
2011-12	282	32	202	167	431	438	408	255	1,921	137	286	80	397	14	866

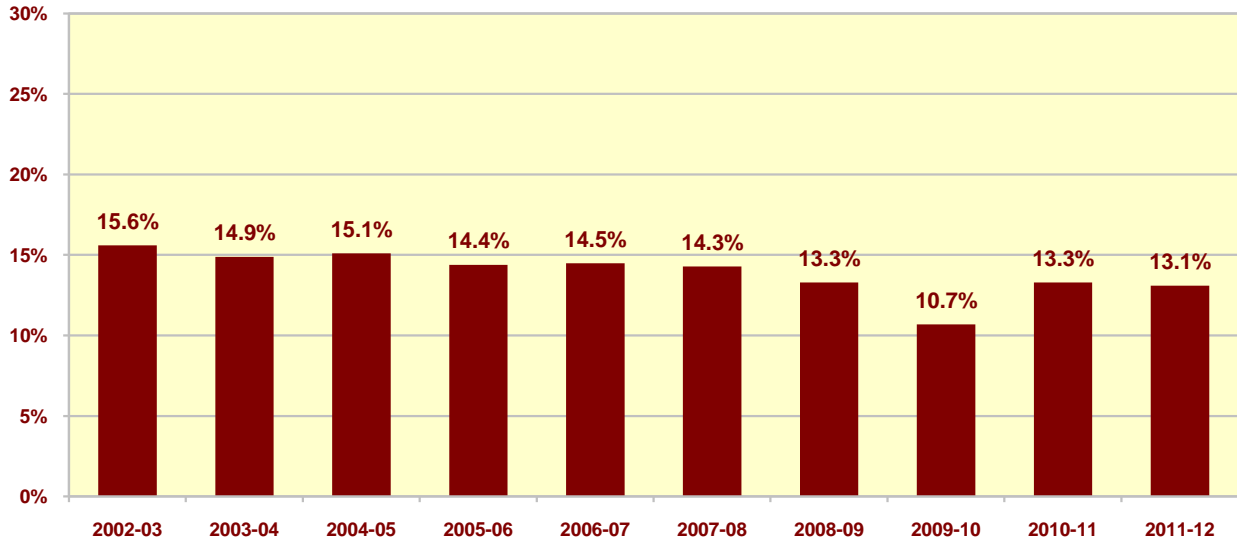
SOURCE: Registrar

\* The Chronicle of Higher Education 2009-10 Almanac

## North Carolina Counties

**As a percent of North Carolina enrollment, Alamance county (where Elon University is located) 2011-12 enrollment decreased from 13.3% to 13.1%.**

*Alamance County, NC Enrollment*

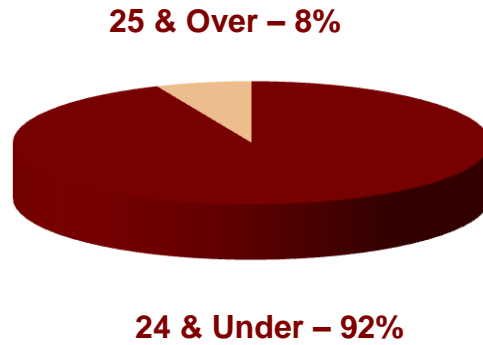


County	1998-99	1999-00	2000-01	2001-02	2002-03	2003-04	2004-05	2005-06	2006-07	2007-08	2008-09	2009-10	2010-11	2011-12
Alamance	325	309	265	238	214	216	220	227	250	259	264	211	264	251
Chatham	6	8	14	12	11	10	10	15	19	15	15	11	14	12
Cumberland	26	28	23	23	24	22	19	18	13	12	16	17	17	15
Davidson	20	22	30	26	27	24	23	31	38	50	57	49	41	46
Durham	49	65	69	75	78	87	89	101	95	80	89	93	103	94
Forsyth	47	56	62	59	75	79	85	85	93	103	107	105	90	85
Guilford	102	112	139	148	141	130	132	148	224	262	305	280	368	359
Mecklenburg	63	91	104	115	148	170	191	221	200	186	194	196	198	191
Orange	39	38	38	41	62	66	65	67	70	92	108	117	115	121
Other	268	310	339	378	389	412	401	402	404	384	428	471	374	370
Randolph	19	17	26	31	30	26	22	20	14	26	35	31	36	31
Rockingham	23	21	21	21	17	26	19	24	31	30	30	28	19	16
Wake	77	84	115	120	136	152	170	208	261	293	316	349	334	330
<b>Grand Total</b>	<b>1,091</b>	<b>1,182</b>	<b>1,266</b>	<b>1,308</b>	<b>1,373</b>	<b>1,447</b>	<b>1,461</b>	<b>1,577</b>	<b>1,729</b>	<b>1,806</b>	<b>1,978</b>	<b>1,969</b>	<b>1,979</b>	<b>1,921</b>

SOURCE: Registrar

## Age

**Ninety-two percent of all students (graduate and undergraduate) attending Elon were below the age of 25 in the 2011-12 academic year.**



Age	Under 18	18	19	20	21	22	23	24	25-30	31-35	36-40	41-50	51-64	65 & Over	Total
1994-95	139	780	728	639	549	194	98	48	140	70	40	58	13	0	<b>3,496</b>
1995-96	134	834	727	646	542	198	64	41	129	66	39	48	9	2	<b>3,479</b>
1996-97	121	842	813	675	588	196	53	30	121	57	34	48	10	0	<b>3,588</b>
1997-98	138	849	808	782	596	201	59	22	85	50	38	42	14	1	<b>3,685</b>
1998-99	114	933	846	753	675	173	67	29	127	46	37	35	8	2	<b>3,845</b>
1999-00	92	911	932	780	659	191	61	45	135	59	41	45	8	2	<b>3,961</b>
2000-01	108	1,002	939	866	692	161	81	32	125	45	32	37	17	1	<b>4,138</b>
2001-02	97	1,067	1,039	891	761	192	47	41	92	37	29	34	13	1	<b>4,341</b>
2002-03	86	1,076	1,064	953	779	185	51	27	83	45	32	38	11	2	<b>4,432</b>
2003-04	90	1,107	1,089	978	847	171	62	32	70	52	31	42	12	1	<b>4,584</b>
2004-05	120	1,102	1,115	1,032	906	230	54	40	79	52	18	39	9	0	<b>4,796</b>
2005-06	117	1,130	1,139	1,051	942	226	63	40	131	54	20	34	8	1	<b>4,956</b>
2006-07	120	1,140	1,184	1,113	990	234	96	75	142	60	30	38	8	0	<b>5,230</b>
2007-08	140	1,187	1,187	1,139	1,017	236	102	93	191	71	41	37	14	1	<b>5,456</b>
2008-09	111	1,141	1,265	1,156	1,036	236	127	101	265	74	50	46	19	1	<b>5,628</b>
2009-10	131	1,139	1,196	1,179	1,078	255	122	130	266	61	53	39	15	2	<b>5,666</b>
2010-11	130	1,196	1,234	1,114	1,095	254	125	113	294	55	49	35	13	2	<b>5,709</b>
2011-12	127	1,264	1,297	1,206	1,061	266	128	117	295	50	50	43	11	1	<b>5,916</b>

SOURCE: Institutional Research

## Religion

**Religious affiliations of the undergraduate student population are listed below.**

<b>Religious Traditions (Undergraduates)</b>	<b>2009-10</b>	<b>2010-11</b>	<b>2011-12</b>
Assembly of God	4	6	8
Baptist	286	284	285
Buddhism	5	5	6
Catholic	1,151	1,213	1,310
Christian	521	561	633
Church of Christ	20	23	23
Church of God	10	5	3
Episcopalian	223	236	260
Hindu	8	9	14
Jewish	180	211	237
Lutheran	113	112	119
Methodist	364	332	337
Mormon	4	4	6
Muslim	1	10	12
No Preference	188	204	268
Pentecostal	9	12	13
Presbyterian	301	299	284
Protestant	89	88	95
Quaker	7	9	7
United Church of Christ	81	72	82
Unknown*	1,430	1,337	1,223
<b>Total</b>	<b>4,995</b>	<b>5,032</b>	<b>5,225</b>

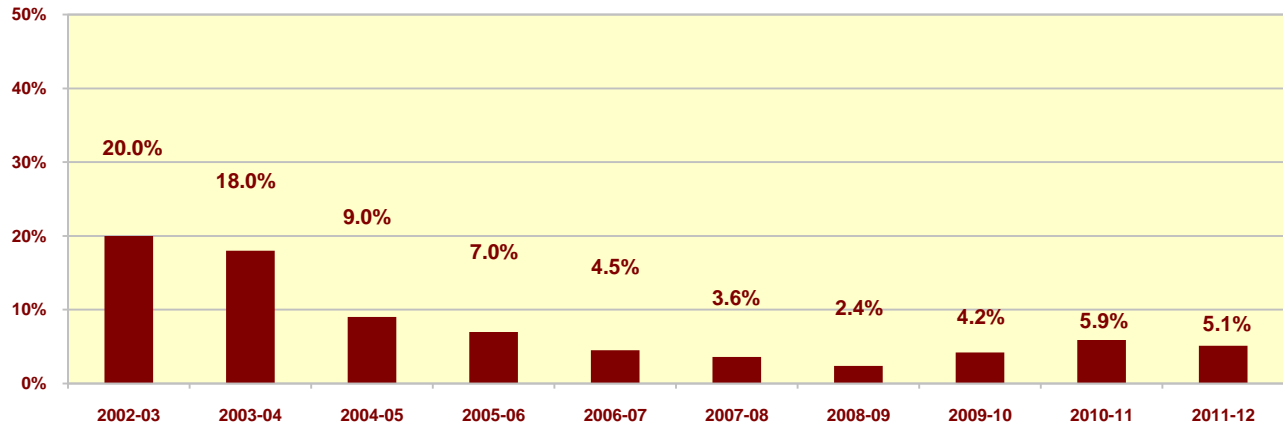
SOURCE: Registrar

\*Undergraduates only; previous years include graduate students

## International Students

**The international student population increased in 2011-12 from 118 to 158 students. Historically Japanese students were the majority of international students.**

*Japanese Student Ratio of International Students*



<b>Elon University</b>			
<u>Academic Year</u>	<u>International Students</u>	<u>Percent Of All</u>	<u>Japanese</u>
1992-93	54	1.7%	14
1993-94	49	1.5%	12
1994-95	56	1.6%	18
1995-96	53	1.5%	13
1996-97	40	1.1%	8
1997-98	36	1.0%	9
1998-99	44	1.1%	17
1999-00	69	1.7%	21
2000-01	69	1.7%	18
2001-02	59	1.4%	19
2002-03	70	1.6%	14
2003-04	61	1.3%	11
2004-05	67	1.4%	6
2005-06	86	1.7%	6
2006-07	89	1.7%	4
2007-08	112	2.1%	4
2008-09	127	2.3%	3
2009-10	120	2.1%	5
2010-11	118	2.3%	7
2011-12	158	3.0%	8

SOURCE: Registrar

## Foreign Countries

	2002-03	2003-04	2004-05	2005-06	2006-07	2007-08	2008-09	2009-10	2010-11	2011-12
Afghanistan	0	0	0	0	0	0	1	1	2	2
Albania	0	0	0	0	0	0	0	0	0	0
Algeria	0	0	0	0	0	0	0	1	0	0
Antigua	0	0	0	0	0	0	0	0	0	0
Argentina	0	0	0	1	0	2	2	2	1	2
Australia	1	1	0	1	2	1	2	4	2	4
Austria	0	0	0	0	0	0	1	1	1	2
Bahamas	1	1	1	1	1	2	4	5	4	2
Bangladesh	0	1	1	0	0	0	0	0	0	0
Barbados	0	1	2	2	0	0	1	0	0	0
Belarus	0	0	1	1	0	1	0	0	0	0
Belgium	2	2	0	2	1	1	2	0	1	3
Belize	0	0	1	1	2	2	1	1	1	0
Bermuda	1	1	1	1	0	0	0	0	0	0
Bolivia	0	0	0	0	1	1	1	0	0	0
Botswana	1	1	1	1	1	0	1	0	0	0
Brazil	1	0	1	1	0	0	2	2	2	4
Bulgaria	0	0	1	1	1	1	0	0	0	1
Canada	1	1	6	8	9	14	15	13	11	16
Cayman Islands	0	0	1	1	1	1	0	0	0	0
Chile	0	1	1	1	1	0	0	0	1	1
China	1	1	1	1	1	1	2	1	1	4
Colombia	0	0	0	0	0	0	0	2	1	1
Costa Rica	2	1	1	4	2	3	5	4	3	0
Cyprus	1	0	0	0	0	0	0	0	0	0
Czech Rep	0	0	0	0	0	0	0	0	1	1
Denmark	0	0	0	0	0	0	0	0	0	1
Dominican Rep.	3	2	0	0	0	0	0	2	0	1
Ecuador	0	0	0	0	0	0	0	1	0	2
Egypt	0	0	0	0	1	1	1	1	0	0
El Salvador	0	0	0	0	0	0	0	0	0	0
England	5	5	0	0	0	0	0	0	0	0
Ethiopia	0	0	0	0	0	0	0	0	0	0
France	0	0	0	0	0	1	5	2	4	6
French Antilles	0	0	0	0	0	0	0	0	0	0
Germany	2	1	2	5	7	8	10	5	10	8

Country	2002-03	2003-04	2004-05	2005-06	2006-07	2007-08	2008-09	2009-10	2010-11	2011-12
Ghana	0	1	1	1	1	2	0	2	4	4
Greece	0	0	0	0	0	0	0	0	1	1
Guatemala	0	0	0	0	1	3	2	2	2	2
Haiti	0	0	1	2	2	4	1	0	0	0
Honduras	0	1	2	2	3	5	3	3	3	1
Hong Kong	0	0	0	0	0	2	3	2	2	0
Hungary	0	1	1	1	0	0	1	0	0	0
Iceland	0	0	0	0	0	0	1	0	0	0
India	3	3	0	0	1	1	0	2	0	0
Iran	1	1	0	0	1	1	1	1	0	1
Iraq	0	0	0	0	0	0	1	1	1	0
Ireland	1	0	0	0	0	0	0	2	1	4
Israel	0	0	0	0	1	0	1	1	1	0
Italy	0	0	0	0	0	1	2	2	2	1
Jamaica	0	2	1	0	1	1	1	0	1	2
Japan	14	11	6	6	4	4	3	5	7	8
Jordan	1	1	1	1	1	0	1	1	1	1
Kenya	0	0	0	1	1	1	0	0	1	1
Korea	1	0	1	2	1	2	0	0	0	0
Kuwait	2	0	0	0	0	0	0	0	0	0
Latvia	0	0	0	0	0	0	0	0	0	0
Lebanon	0	0	0	1	0	1	0	1	0	0
Lithuania	1	0	0	0	0	0	0	0	0	0
Luxembourg	0	0	0	0	0	1	0	0	0	0
Malawi	0	0	0	0	0	0	0	0	0	0
Malaysia	1	0	0	0	0	0	0	0	0	0
Mexico	1	1	1	1	1	1	2	2	1	1
Nepal	0	0	0	0	0	0	1	1	1	1
Netherland Antil	0	0	0	0	0	0	0	0	0	0
Netherlands	1	1	1	3	2	1	2	1	3	3
New Zealand	0	0	0	0	0	0	0	0	0	1
Nicaragua	0	0	0	0	0	0	1	3	3	3
Nigeria	1	1	2	2	1	4	1	1	0	0
Norway	0	0	0	0	0	0	0	1	0	1
Pakistan	1	0	0	0	0	0	0	0	0	0
Paraguay	0	0	0	0	0	0	0	1	0	0
Panama	0	0	1	2	3	4	5	4	5	5
PR of China	0	0	0	0	0	0	0	0	0	0



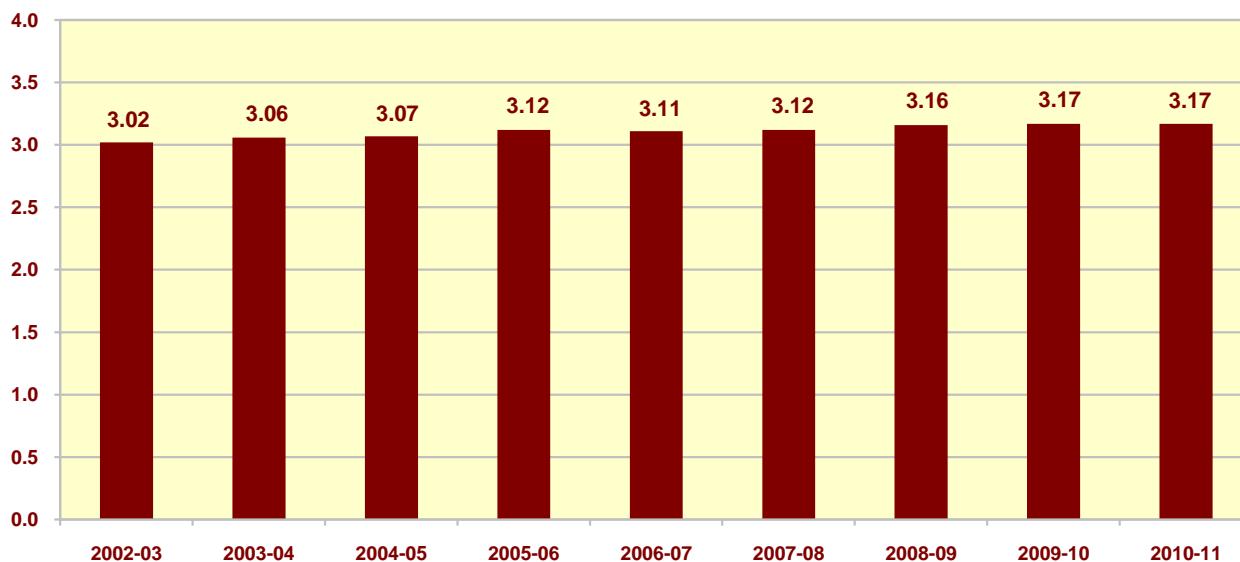
Country	2002-03	2003-04	2004-05	2005-06	2006-07	2007-08	2008-09	2009-10	2010-11	2011-12
Peru	1	1	0	0	0	0	0	1	2	3
Philippines	0	0	0	1	1	0	1	1	0	1
Poland	2	3	3	2	1	2	3	3	3	2
Romania	0	0	0	0	0	0	0	0	0	1
Russia	2	1	1	1	1	0	0	0	1	1
Saudia Arabia	0	0	0	0	0	0	0	0	2	4
Sierra Leone	0	0	1	1	1	1	0	0	0	0
Singapore	0	0	0	0	0	0	3	0	3	2
Slovak Republic	0	0	0	0	0	1	1	0	0	1
Slovenia	0	0	0	0	0	0	0	0	0	0
Scotland	0	0	0	0	0	0	0	0	0	0
South Africa	2	2	3	2	3	4	3	2	0	2
South Korea	0	0	0	0	4	1	2	2	1	2
Spain	1	0	0	1	1	1	2	1	1	2
Sweden	2	0	1	4	6	4	3	1	3	3
Switzerland	1	2	1	0	0	1	1	1	2	3
Taiwan	1	0	1	1	0	0	0	1	0	2
Thailand	1	2	2	0	1	1	1	2	2	1
Trinidad/Tabago	0	1	1	1	1	0	0	1	1	2
Tunisia	0	0	0	0	0	0	0	0	1	1
Turkey	1	0	0	0	0	0	0	0	0	0
Ukraine	1	0	0	0	0	0	0	0	0	0
United Kingdom	0	0	9	11	12	15	15	15	11	20
Venezuela	1	0	0	0	0	0	1	0	1	1
Vietnam	1	1	1	0	0	0	0	0	0	1
Virgin Islands	0	0	0	0	0	1	0	0	0	0
West Indies	0	0	0	0	0	0	1	0	0	0
Yugoslavia	1	2	1	3	2	1	1	0	0	0
Zambia	0	1	1	0	0	0	0	0	0	0
Zimbabwe	1	1	0	0	0	0	0	2	1	1
<b>Grand Total</b>	<b>70</b>	<b>61</b>	<b>67</b>	<b>86</b>	<b>90</b>	<b>112</b>	<b>127</b>	<b>120</b>	<b>121</b>	<b>158</b>

SOURCE: Registrar

## Institutional GPA & Grade Distribution

On average, students earned a 3.17 GPA during fall 2010-11.

*Average GPA*



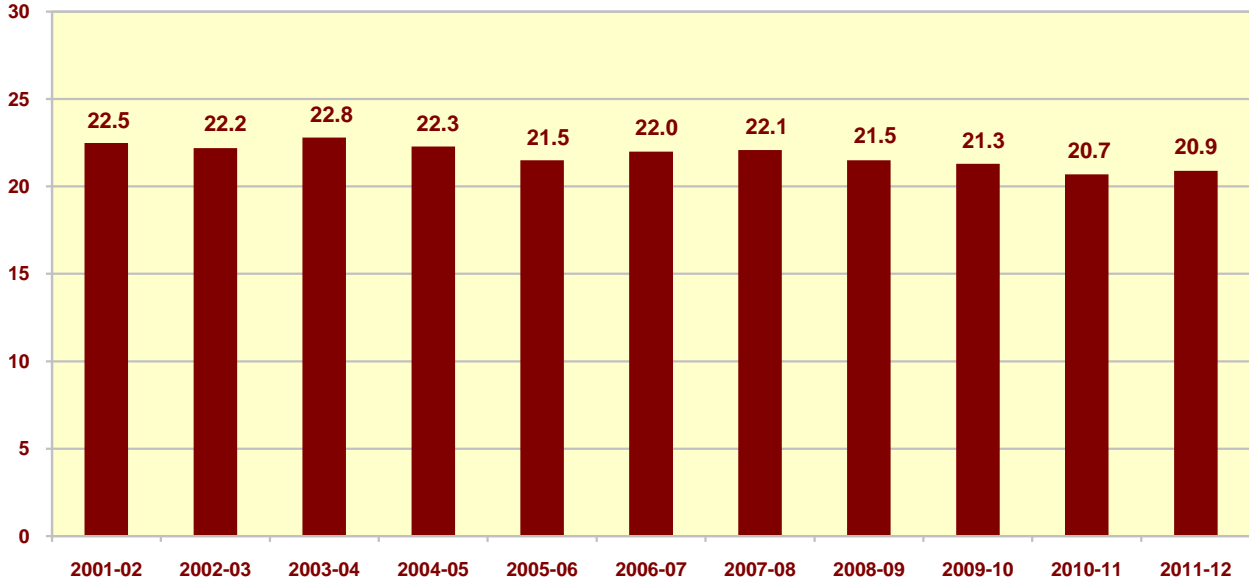
Elon University						
Fall Term						
Academic Year	A's	B's	C's	D's	F's	GPA
1991-92	23%	33%	22%	7%	4%	2.67
1992-93	24%	33%	22%	7%	4%	2.71
1993-94	24%	34%	21%	6%	4%	2.71
1994-95	25%	35%	19%	5%	3%	2.80
1995-96	26%	35%	19%	5%	3%	2.80
1996-97	28%	34%	18%	5%	3%	2.82
1997-98	29%	35%	17%	4%	2%	2.86
1998-99	29%	35%	16%	4%	2%	2.88
1999-00	30%	35%	16%	4%	2%	2.90
2000-01	33%	35%	13%	3%	2%	3.00
2001-02	34%	35%	14%	3%	2%	3.02
2002-03	34%	35%	13%	3%	2%	3.02
2003-04	34%	36%	13%	3%	1%	3.06
2004-05	36%	36%	12%	2%	2%	3.07
2005-06	38%	35%	12%	2%	1%	3.12
2006-07	37%	36%	11%	2%	2%	3.11
2007-08	39%	36%	11%	2%	1%	3.12
2008-09	40%	36%	10%	2%	1%	3.16
2009-10	40%	35%	9%	2%	1%	3.17
2010-11	41%	34%	10%	2%	1%	3.17

SOURCE: Registrar

## Average Class Size

Elon's average class size in 2011-12 was 20.9

*Average Class Size*

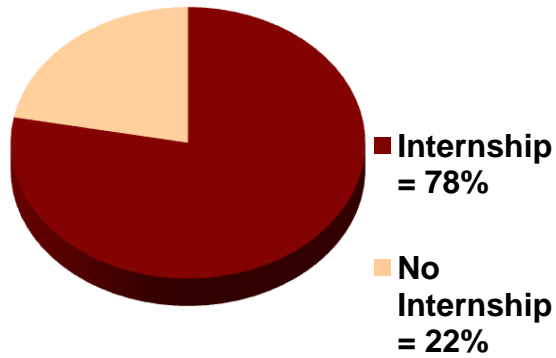


<b>Elon University</b>						
<u>Academic Year</u>	<u>Freshman</u>	<u>Sophomore</u>	<u>Junior</u>	<u>Senior</u>	<u>Graduate</u>	<u>Overall</u>
1993-94	25.1	24.3	22.2	13.2	19.9	23.0
1994-95	25.8	24.5	22.7	15.9	18.9	23.7
1995-96	26.6	24.6	21.7	15.6	16.6	23.7
1996-97	25.8	24.9	23.2	15.8	16.2	23.8
1997-98	25.3	22.3	21.1	16.0	17.3	22.5
1998-99	24.6	22.3	20.7	15.8	24.7	22.2
1999-00	24.9	22.4	21.0	17.5	28.8	22.8
2000-01	23.8	23.2	21.7	16.0	33.3	22.6
2001-02	24.3	23.2	20.9	16.3	23.0	22.5
2002-03	25.2	22.4	20.1	16.3	20.6	22.2
2003-04	25.9	23.0	21.6	15.1	20.8	22.8
2004-05	24.9	22.5	21.4	15.0	20.7	22.3
2005-06	24.1	21.6	20.2	15.1	22.0	21.5
2006-07	23.8	22.3	20.4	13.7	38.5	22.0
2007-08	23.6	21.9	20.9	14.1	34.0	22.1
2008-09	23.5	20.3	19.9	14.8	29.1	21.5
2009-10	23.2	21.0	19.3	14.8	27.5	21.3
2010-11	23.0	19.9	18.5	13.6	28.1	20.7
2011-12	22.8	20.6	18.5	14.2	27.4	20.9

SOURCE: Provost Office

## Internships/Co-ops

Seventy-eight percent of 2010-11 graduating seniors participated in at least one internship or co-op for credit.

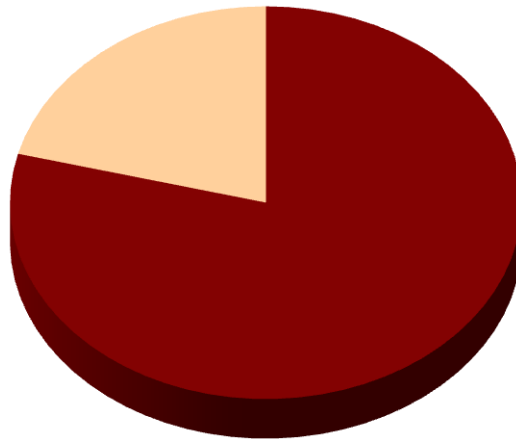


Elon University	
Academic Year	% Of Internships
1992-93	54%
1993-94	55%
1994-95	55%
1995-96	67%
1996-97	62%
1997-98	60%
1998-99	76%
1999-00	75%
2000-01	78%
2001-02	78%
2002-03	78%
2003-04	75%
2004-05	78%
2005-06	78%
2006-07	80%
2007-08	80%
2008-09	84%
2009-10	78%
2010-11	78%

SOURCE: Elon Career Center

## Volunteer Service

Seventy-nine percent of 2010-11 graduating seniors engaged in some form of volunteer or service activity.



■ Service = 79%   ■ No service = 21%

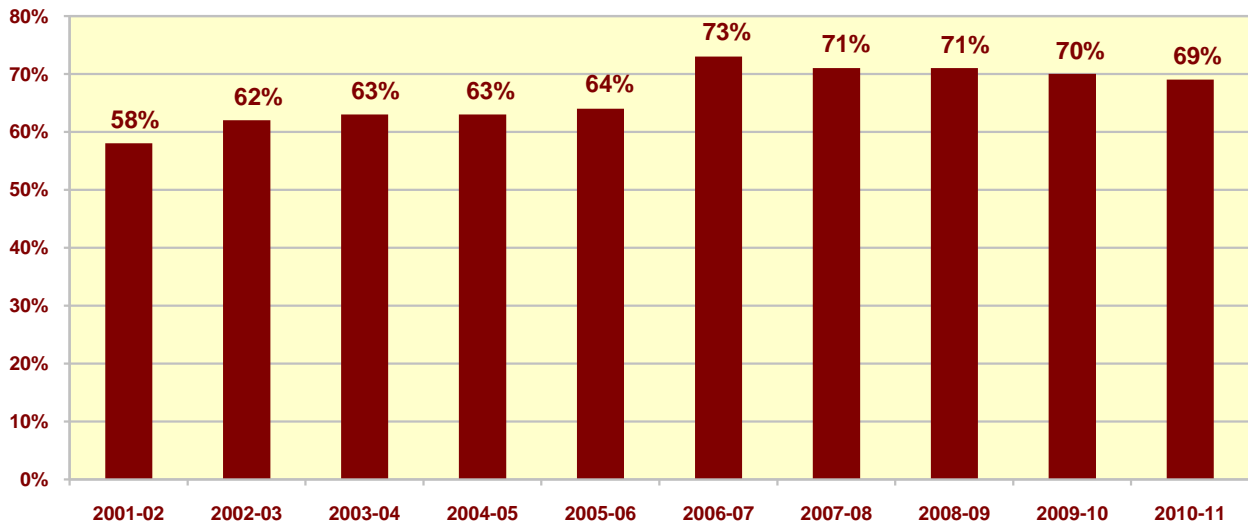
Elon University	
<u>Academic Year</u>	<u>Volunteer Service</u>
1991-92	25%
1992-93	38%
1993-94	52%
1994-95	54%
1995-96	59%
1996-97	64%
1997-98	67%
1998-99	65%
1999-00	75%
2000-01	82%
2001-02	85%
2002-03	87%
2003-04	88%
2004-05	89%
2005-06	89%
2006-07	91%
2007-08	89%
2008-09	87%
2009-10	83%
2010-11	79%

SOURCE: Center for Service Learning

## Study Abroad

**Sixty-nine percent of 2010-11 graduating seniors studied abroad while at Elon.**

*Study Abroad*



<b>Elon University</b>	
<u>Academic Year</u>	<u>Study Abroad</u>
1992-93	22%
1993-94	28%
1994-95	33%
1995-96	37%
1996-97	40%
1997-98	42%
1998-99	46%
1999-00	50%
2000-01	54%
2001-02	58%
2002-03	62%
2003-04	63%
2004-05	63%
2005-06	64%
2006-07	73%
2007-08	71%
2008-09	71%
2009-10	70%
2010-11	69%

SOURCE: Elon Experiences File