



# ELON DPT

A C A D E M I C   C A T A L O G   2 0 0 8 - 2 0 0 9



**Elon University** programs are built upon the liberal arts and sciences and offer excellent professional preparation. The Martha and Spencer Love School of Business, which offers the MBA, is one of only four business schools at private institutions in North Carolina accredited by the Association to Advance Collegiate Schools of Business (AACSB International). This is the highest standard of achievement for business schools worldwide. The M.Ed. is offered through Elon's School of Education, which is accredited by the National Council for Accreditation of Teacher Education (NCATE). The physical therapy department at Elon offers the DPT and has earned accreditation by the Commission on Accreditation in Physical Therapy Education (CAPTE) of the American Physical Therapy Association (APTA). The Elon University School of Law opened on the Greensboro campus in August 2006 and received provisional accreditation by the American Bar Association in June 2008, the earliest possible date under accreditation guidelines. Beginning in summer 2009, Elon will offer a master's degree in interactive media. Each of the graduate programs is stamped with Elon's distinctive academic approach, combining rigorous intellectual activity and practical experience. Small classes and creative, dedicated faculty make the Elon graduate experience personal, challenging, and exciting. I welcome your interest in graduate education at Elon and hope you will give serious consideration to joining our community of scholars.

Sincerely,

*Leo M. Lambert*

*President, Elon University*



# CONTENTS

## GRADUATE EDUCATION AT ELON

MBA .....	2
M.Ed.....	2
DPT.....	3
J.D. ....	3
VISITING AND CONTACTING CAMPUS.....	3

## INTRODUCTION

THE MISSION OF ELON UNIVERSITY GRADUATE PROGRAMS.....	4
HISTORY.....	4
LOCATION.....	5
DEGREES AND MAJORS.....	5
ENROLLMENT.....	6
ACCREDITATION.....	6
LIBRARY/TECHNOLOGY CENTER.....	6
WRITING ASSISTANCE AND COMPUTER SERVICES.....	6
CAREER SERVICES AND PROFESSIONAL PLACEMENT ASSISTANCE	7
PARKING.....	7
THE GRADUATE ADMISSIONS PROCESS.....	7
Basic Requirements.....	7
Application Procedures, Testing, Transfer Credits and Graduate	
Program Costs.....	7
ACADEMIC REGULATIONS.....	9
Course Registration.....	9
Changes in Class Schedule.....	9
Dropping Courses.....	9
Graduate Grading System and Quality Points.....	9
Grade Point Average (GPA).....	10
Continuation Standards and Graduation Requirements.....	10
Access to Student Educational Records.....	10

Transcripts of Student Records.....	11
Changes.....	11
Policies.....	11

## THE DPT PROGRAM

A STRONG PROGRAM.....	13
A PROGRAM BASED ON A PHILOSOPHY OF EXCELLENCE.....	13
A UNIQUE MODULAR CURRICULUM.....	13
ACCREDITATION.....	14
PROGRAM MISSION.....	14
PROGRAM GOALS.....	14
THE FACULTY.....	15
COSTS.....	15
REFUNDS.....	12
EXCEPTIONS TO THE INSTITUTIONAL POLICY.....	12
DPT ADMISSIONS REQUIREMENTS AND PROCEDURES.....	12
Completion of Prerequisite Courses.....	13
Transcript Requests.....	13
Recommendations.....	14
Testing for DPT Students: GRE.....	14
International Students.....	14
Prerequisite Courses.....	14
Transfer Credits.....	15
Continuation Standards.....	15
GRADUATION AND DEGREE REQUIREMENTS.....	15
GRADUATE-LEVEL LICENSURE.....	15
YEAR I.....	15
YEAR II.....	18
YEAR III.....	19
ADMINISTRATION.....	21
FACULTY.....	21

# GRADUATE EDUCATION AT ELON

Located in the beautiful Piedmont section of North Carolina, Elon University has earned a regional and national reputation for excellence both in undergraduate and graduate programs. Academic innovation is the hallmark of an Elon education, and the Master of Business Administration (MBA), Master of Education (M.Ed.), Doctor of Physical Therapy (DPT) and Juris Doctor (J.D.) programs exemplify Elon's commitment to combining a stimulating classroom environment with opportunities to apply knowledge in a practical setting.



## **MBA**

In the Elon MBA program, graduate students develop analytical and leadership skills. They learn the theories and concepts inherent in the disciplines of accounting, business administration and economics, and they prepare for business careers requiring innovative leadership, a knowledge of global markets and facility with sophisticated information technology. The distinctive program includes the opportunity to incorporate into their current work the skills and concepts they learn in their graduate courses. The program also includes a regularly scheduled international trip exposing students to foreign markets and the global economy. This program, designed to meet the needs of full-time working professionals, is typically completed within 21 to 33 months.

## **M.Ed.**

The M.Ed. program offers graduate licensure in elementary education (K-6), gifted education (K-12), and special education (K-12). In the M.Ed. program, students hone skills for implementing appropriate instruction, differentiating curriculum for special needs students, and planning and conducting behavior management programs. While skill development is an important aspect of the program, empowering teachers to make professionally mature decisions and developing collaborative leadership and research expertise are emphasized. The M.Ed. Summer Cohort program provides licensed teachers the opportunity to complete the degree in just three summers. The Advanced Track option allows students with degrees outside education to obtain initial and advanced licensure in an integrated program.

## DPT

Graduate students enrolled in the Doctor of Physical Therapy program have unique opportunities to practice specific learning objectives in a variety of clinical settings. The partnership between Alamance Regional Medical Center and Elon's Department of Physical Therapy offers students a wealth of clinical and research opportunities. The philosophy of the DPT program emphasizes critical thinking, active learning, strong clinical experiences, and inquiry-based approaches to treatment and research. The program produces graduates who are highly skilled clinician generalists and compassionate individuals, well prepared for leadership as key members of a health care team.

## J.D.

The Elon University School of Law opened in downtown Greensboro, North Carolina, in fall 2006 with a charter class of 100 students. The school builds on Elon University's national reputation for excellence in engaged learning and leadership education. It provides experiential opportunities for law students in a learning laboratory environment, with direct access to the region's major courts, law firms and government and nonprofit agencies. Elon law students acquire excellent knowledge of the law. They develop broad lawyering skills and learn how to listen, communicate, interact effectively and resolve conflict in the broad range of complex situations lawyers confront. They are empowered to improve our system of justice and make the world a better place.

The School of Law produces a separate academic catalog, which can be accessed online at [law.elon.edu](http://law.elon.edu).



## VISITING AND CONTACTING CAMPUS

Visitors to the university are welcome at all times. Administrative offices are open Monday through Friday from 8 a.m. until 5 p.m. The Office of Graduate Admissions is located on the Elon campus in the Powell building, suite 101, and can be reached at 336-278-7600 or 800-334-8448, ext. 3 (Fax: 336-278-7699). You may also wish to contact us by e-mail at [gradadm@elon.edu](mailto:gradadm@elon.edu). For information about visiting the School of Law, contact the admissions office at 336-279-9200 or [law@elon.edu](mailto:law@elon.edu).

*Elon University does not discriminate with regard to race, color, religion, sex, age, national or ethnic origin, veteran status or disability in the recruitment and admission of students, the recruitment and employment of faculty and staff or the operation of any of its programs. Students with documented disabilities may request in writing reasonable special services and accommodations. Questions should be directed to Ms. Susan Wise, disability services coordinator, Duke 108H, 336-278-6500. The university's Section 504 coordinator for students and Title IX coordinator is Ms. Jana Lynn Patterson, Moseley 206, 336-278-7200. The university's Section 504 coordinator for applicants and current employees is Mr. Ronald Klepcyk, 314 W. Haggard Ave., 336-278-5560.*

# INTRODUCTION

## **THE MISSION OF ELON UNIVERSITY GRADUATE PROGRAMS**

Through its graduate programs, Elon University gives students the opportunity to acquire a high level of competence in their fields of interest and to gain significant experience in the application of advanced knowledge and skills. Graduate programs offered at Elon foster a stimulating intellectual community based upon close interaction with faculty, academic engagement with peers in and out of the classroom, and a university environment fully committed to supporting inquiry and research. Graduates from Elon's advanced degree programs are prepared to assume positions as active professionals committed to continued learning and to the advancement of their professions.

Elon University offers graduate programs that are:

- Connected to the university's undergraduate programs, building on existing strengths and contributing to the enhancement of the quality of the undergraduate experience
- Committed to the broad perspective of arts and sciences
- Distinctive, excellent in overall quality and responsive to the needs of society
- Committed to the intellectual growth and development of each student
- Supportive of both faculty and student scholarly activity and its dissemination to the appropriate community of scholars and practitioners.

## **HISTORY**

Elon University is a private, co-educational, comprehensive university. Founded in 1889 by the Christian Church (now United Church of Christ), it is the third largest of North Carolina's 36 private colleges and universities.

During the 1980s, Elon experienced a decade of unprecedented growth. During this time, applications doubled and enrollment increased 35 percent, making Elon one of the fastest-growing institutions in the region. Dozens of academic and student life programs were added to enrich the quality of an Elon education. Special classes and volunteer programs were developed to provide students with leadership and service opportunities. In fall 1984, the university began offering a Master of Business Administration degree through the Martha and Spencer Love School of Business. In fall 1986, a Master of Education degree was added, and in 1997, a Master of Physical Therapy degree program



was established. In 2003, the Doctor of Physical Therapy replaced the MPT. The Elon University School of Law opened in fall 2006.

Also during the '80s and '90s, the university's physical plant grew. Total campus acreage doubled, square footage of buildings increased and significant new facilities were added, including **Carol Grotnes Belk Library**, featuring 75,000 square feet with more than 250 computers, networked study rooms and multimedia and audiovisual stations; **Dalton L. McMichael Sr. Science Center**, providing 81,000 square feet of research laboratories, high-tech instrumentation and computer technology; **Moseley Campus Center**, a 74,000-square-foot student center; and **Koury Center**, a physical education, athletics and recreation complex. In the early part of the new century, Elon opened **Rhodes Stadium**, **Belk Track**, **White Field** and five pavilions in the **Academic Village**.

In the summer of 2006, Elon opened the three-story, 60,000-square-foot **Ernest A. Koury, Sr. Business Center**, home of Elon's Martha and Spencer Love School of Business. The Center includes the LaRose Digital Theatre; the LabCorp Suite for Executive Education; the William Garrard Reed Finance Center with real-time data from global financial markets; and the James B. and Anne Ellington Powell Lobby.



## LOCATION

Elon's historic campus is ideally situated on almost 580 acres in central North Carolina, adjacent to Burlington, a city of 50,000. Elon's brick sidewalks, Georgian architecture and state-of-the-art facilities are surrounded by majestic oak trees and lovely gardens. The university is a 40-minute drive from UNC-Chapel Hill and Duke University, and 30 minutes from Greensboro, a city that regularly offers major concerts and sporting events. A dozen other colleges and universities are less than an hour away.

Downtown Greensboro is also the location of the new Elon School of Law, an 84,000-square-foot facility including a new multimillion-dollar library collection, wireless technology, courtroom and specialized labs and classrooms, adjacent to federal and state courts, government offices and major law firms.

Airline services are conveniently located at the Piedmont Triad International Airport in Greensboro and at the Raleigh-Durham International Airport. Amtrak serves Greensboro and Raleigh with daily connections to Burlington.

## DEGREES AND MAJORS

Elon University offers 52 major fields of study leading to the bachelor of arts, bachelor of fine arts or bachelor of science degree. The university also offers a dual-degree engineering program in cooperation with Columbia University, Penn State University, Georgia Tech, North Carolina A&T State University, North Carolina State University, Notre Dame University, Virginia Tech and Washington University in St. Louis.

Elon's graduate programs include a Master of Business Administration (MBA) at the Martha and Spencer Love School of Business; a Master of Education (M.Ed.) with specialty areas in elementary, gifted and special education; a doctor of physical therapy (DPT); and the juris doctor (J.D.) degree. A master's degree program in interactive media will be offered beginning in summer 2009.

## **ENROLLMENT**

With approximately 700 graduate and 5,000 undergraduate students, Elon is smaller than most universities. Students come from 46 states and 45 other nations, with 68 percent of enrollment coming from outside North Carolina. At Elon you won't be lost in a crowd, but you will meet and interact with many new people.

## **ACCREDITATION**

Elon University is accredited by the Commission on Colleges of the Southern Association of Colleges and Schools (1866 Southern Lane, Decatur, GA 30033-4097; phone: 404-679-4501) to award bachelor's and master's degrees, the doctor of physical therapy degree, and the juris doctor degree.

The Master of Business Administration program is accredited by AACSB International – The Association to Advance Collegiate Schools of Business.

The Master of Education program is accredited by the National Council for Accreditation of Teacher Education and by the North Carolina State Department of Public Instruction.

The Doctor of Physical Therapy Program is accredited by the Commission on Accreditation in Physical Therapy Education of the American Physical Therapy Association (1111 North Fairfax Street, Alexandria, VA 22314; phone: 703-706-3245).

The Juris Doctor program received provisional accreditation from the American Bar Association in spring 2008.

## **LIBRARY/TECHNOLOGY CENTER**

The state-of-the-art Belk Library features the latest in information technology and is located at the center of campus, convenient to all graduate classrooms. It is uniquely designed to integrate print, electronic and audiovisual resources, with an extensive program of research, tutoring and technical support available during all hours of operation to assist students and faculty. More than 200 Macintosh and Windows desktop computers and wireless laptop computers offer access to the online catalog and the Internet. Students can choose among a wide variety of individual and group study spaces while using the more than 280,000 volumes, government documents and media resources. More than 27,000 online journals are available, as well as an extensive video and audio collection.

Belk Library also houses the Tutoring and Writing Center and the Faculty Resource Center. Please visit [www.elon.edu/library](http://www.elon.edu/library) for more information.

## **WRITING ASSISTANCE AND COMPUTER SERVICES**

Elon has a well-established writing center located in Belk Library. Graduate students seeking assistance with writing may utilize the services of the center, including one-on-one tutoring, without charge. Graduate students may use computer labs with Internet access, and they can set up free e-mail accounts. Staff members are available to provide assistance. There are approximately 940 computer work stations on campus in 50 computer labs.





## **CAREER SERVICES AND PROFESSIONAL PLACEMENT ASSISTANCE**

The Career Center, located in Duke building, assists graduate students individually as they identify their career direction and finalize their career search. The Career Center has incorporated modern technology to provide effective student/employer matches and to assist students in accessing current employer literature. Programs for graduate students include resume referral to employers, individual job search assistance, job vacancy lists, and workshops on resume writing and job interviewing. For details, please visit [www.elon.edu/careers](http://www.elon.edu/careers).

## **PARKING**

Student parking at Elon is convenient and easily accessible. For full-time students enrolled in the DPT program, the annual fee is \$80. No parking fees apply for graduate students enrolled in the M.Ed. program. There is a \$10 fee for MBA students.

## **THE GRADUATE ADMISSIONS PROCESS**

Elon's admissions policy encourages the selection of students who have demonstrated both academic ability and talent in their field. Each application is considered in light of all completed academic work, test scores, evidence of leadership and motivation, work history, credentials and letters of recommendation.

Applicants should consult the section in this catalog dealing with their desired degree for specific admissions requirements. This information, as well as an application, can also be obtained from the **Office of Graduate Admissions, 2750 Campus Box, Elon, NC 27244** or the **Elon Graduate Admissions Web site at [www.elon.edu/graduate](http://www.elon.edu/graduate)**. Please note that undergraduates are not permitted to register for graduate courses.

## **BASIC REQUIREMENTS**

- Evidence of an earned bachelor's degree from an accredited college or university
- Strong undergraduate record
- Official transcripts of all undergraduate and any graduate studies completed or taken
- Three letters of recommendation
- TOEFL scores for international students, unless English is the student's native language or the language of instruction

## **APPLICATION PROCEDURES, TESTING, TRANSFER CREDITS AND GRADUATE PROGRAM COSTS**

Since all of Elon's graduate programs differ in application procedures, testing, transfer credits and program costs, graduate students should consult the section in this catalog dealing with their desired degree for program-specific information.

## **FORMS OF FINANCIAL ASSISTANCE FOR GRADUATE STUDENTS**

Elon is committed to assisting eligible students in securing the necessary funds for their graduate school program. To the extent possible, eligible students receive assistance through careful planning and through accessing various forms of financial assistance.



In order to receive any type of university, state or federal funding, students must demonstrate satisfactory academic progress toward the completion of graduate degree requirements. No financial assistance is offered until an applicant has been accepted for admission to a graduate program.

### Elon University Payment Program

Elon offers a payment plan to all graduate students. The plan requires an initial payment of one-third of the total cost of the program with the remainder divided into two equal payments. For further information on this payment plan, contact the Office of Graduate Admissions at 800-334-8448, ext. 3. Students must submit a new application for each semester.

In addition, the university accepts American Express, VISA, MasterCard and Discover Card for payment of tuition and books.

### Federal Stafford Loan (Subsidized)

Fixed 6.8% loans may be awarded to fully admitted students who register for at least half time and who demonstrate financial need. These loans are federally guaranteed. With these loans, no interest accrues, nor is any payment due, until six months after the student graduates or ceases to be enrolled at least half-time. Students must file the Free Application for Federal Student Aid (FAFSA) and the Elon University Financial Aid Form to be considered for this program. These forms are available in the Financial Planning Office, 336-278-7640.

### Federal Stafford Loan (Unsubsidized)

Fixed 6.8% loans may be awarded to fully admitted students who are enrolled at least half time. Students do not need to demonstrate financial need to qualify for this program. These loans are federally insured, and no payment of principal is due until six months after the student ceases to be at least a half-time student or graduates. However, borrowers do not qualify for the federal interest subsidy, and interest accrues while the student is enrolled in school. Students must file the FAFSA and the Elon University Financial Aid form to be considered for this program. These forms are available in the Financial Planning Office, 336-278-7640.

### The Federal Graduate PLUS Loan Program

For students who need financial assistance beyond the \$20,500 Stafford Loan maximum, there is the federal Graduate PLUS loan program. The PLUS loan allows for the deferment of repayment while the student is enrolled. The PLUS loan carries a fixed 8.5% interest rate. The maximum amount a student may borrow from the PLUS Loan program is Elon's Cost of Attendance less any Stafford Loans and other forms of financial aid a student may be receiving. Information about the Graduate PLUS Loan may be obtained from the Office of Financial Planning.

### North Carolina Student Loan Program for Health, Science and Mathematics

Need-based loans are available for residents of North Carolina who are unconditionally accepted into a graduate program in mathematics, health or science fields. These loans are administered by the North Carolina State Education Assistance Authority. For a brochure and application, call 800-600-3453, visit [www.CFNC.org](http://www.CFNC.org) or write N.C. Health, Science and Math Student Loan Program, P.O. Box 14223, Research Triangle Park, NC 27709-4223.



### *American Physical Therapy Association*

Doctor of Physical Therapy students are encouraged to contact the American Physical Therapy Association at 800-999-2782 to obtain the Financial Assistance Resource Guide. This publication lists scholarships, awards, grants and fellowships available to students and physical therapists. Minority students are encouraged to request the Minority Scholarship Financial Aid Information Packet. Copies are available in the Financial Planning Office and the Department of Physical Therapy Education.

### *Private Sources*

Many companies, corporations, foundations and school systems offer assistance to students based on a variety of qualifications. Students should investigate policies of their employers and check with the many local civic organizations to determine the availability of such funds and their application procedures.

*Please note that federal and state loan programs are not available to international students.*

## **ACADEMIC REGULATIONS**

### **COURSE REGISTRATION**

Registration information is available to all students prior to registration. Students are expected to register themselves on designated days. Registration includes academic advising, selection of courses and payment of fees. As part of the preregistration/registration process, graduate faculty are available to offer advice concerning scheduling of courses and assisting with registration.

Undergraduates are not permitted to register for graduate courses.

### **CHANGES IN CLASS SCHEDULE**

The university reserves the right to cancel or discontinue any course because of small enrollment or for other reasons deemed necessary. In order to assure quality instruction, the university reserves the right to close registration when the maximum enrollment has been reached and to make changes in schedule and/or faculty when necessary.

### **DROPPING COURSES**

A student may officially drop any class with a “W” (withdraw without penalty) halfway through the term, which includes the week of examinations. The withdrawal period applies to programs following the regular semesters and the summer sessions. After that date, no class may be dropped. Any exception to this policy is the responsibility of the appropriate academic dean’s office.

A course dropped without permission of the Registrar is automatically graded “F”

A student who withdraws from the university for any reason (except for a medical reason) receives grades of “W” if the withdrawal is before the designated half-term time period. After this time a student will receive a “W” or “F” depending on his/her grades at the time of withdrawal.



**GRADUATE GRADING SYSTEM AND QUALITY POINTS**

Graduation is dependent upon the quality as well as the quantity of work completed. Letter grades are used. They are interpreted in the following table, with the quality points for each hour of credit shown at right:

<i>Grade</i>	<i>Quality Points</i>
A Distinguished .....	4.0
A- Excellent .....	3.7
B+ Above average .....	3.3
B Average .....	3.0
B- Below average .....	2.7
C Unsatisfactory .....	2.0
F Failure .....	0
I Incomplete .....	0
WD Medical withdrawal .....	0
W Withdrawal .....	0
NR No report .....	0

Pluses and minuses added to the letter grade pertain only to the MBA program. For the DPT grading system, please refer to the DPT Student Handbook. Grades of “A” through “F” are permanent grades and may not be changed except in case of error. After a professor has certified a grade to the Registrar, he or she may change it before the end of the next regular grading period. The change must be made in writing and have the written approval of the program director/committee chairperson.

An “I” grade signifies incomplete work because of illness, emergency, extreme hardship or self-paced courses. It is not given for a student missing the final examination unless excused by the Dean of Academic Affairs upon communication from the student. After the date designated on the appropriate academic calendar, “I” grades automatically change to “F” unless an extension is granted by the Dean of Academic Affairs.

**GRADE POINT AVERAGE (GPA)**

The grade point average is computed by dividing the total quality points on work attempted at Elon University by the number of hours attempted, except for courses with grades of “WD,” “W” or “S.”

**CONTINUATION STANDARDS AND GRADUATION REQUIREMENTS**

Since all of Elon’s graduate programs differ in continuation standards and graduation requirements, graduate students should consult the section in this catalog dealing with their desired degree for program-specific information.

**ACCESS TO STUDENT EDUCATIONAL RECORDS**

Elon University complies with the Family Educational Rights and Privacy Act of 1974. This act protects the privacy of educational records, establishes the right of students to inspect and review their educational records, and provides guidelines for the correction of inaccurate or misleading data through informal and formal hearings. Students also have the right to file complaints with the Family Educational Rights and Privacy Act Office concerning alleged failures by the institution to comply with the act.

Questions concerning the Family Educational Rights and Privacy Act may be referred to the Office of the Registrar.



### ***TRANSCRIPTS OF STUDENT RECORDS***

Requests for copies of a student's record should be made to the **Office of the Registrar, 2106 Campus Box, Elon, NC 27244**. All graduate transcripts reflect the student's complete graduate academic record. No transcripts will be issued without the written authorization of the student. No transcript is issued for a student who has a financial obligation to the university.

### ***CHANGES***

Adequate notice will be given to enrolled students as changes are made in the graduate programs.

### ***POLICIES***

Instructional and financial policies not covered in this document will follow those printed in the official Elon University Academic Catalog. Students may obtain a copy of this catalog from the **Office of Admissions, 2700 Campus Box, Elon, NC 27244**. The catalog is also available online at [www.elon.edu/catalog](http://www.elon.edu/catalog).





# THE DPT PROGRAM

## **A STRONG PROGRAM**

In partnership with Alamance Regional Medical Center, Elon's Department of Physical Therapy Education enrolled its charter class for the Master of Physical Therapy program in January 1998.

In January 2003, the MPT was replaced by a Doctor of Physical Therapy program. Elon's DPT program seeks to produce graduates who will be highly skilled clinician generalists. Graduates will exemplify compassion for individuals of every age, means and ethnicity, and they will be well prepared for leadership, possessing professional integrity as they become part of the health-care team.

ARMC's values mirror those of Elon University: excellence, compassion, efficiency, creativity and leadership. The partnership with ARMC provides continuing professional growth for physical therapy faculty. The Center for Fitness and Human Movement Studies at ARMC offers clinical and research opportunities for students and faculty.

The Department of Physical Therapy Education was created to extend Elon's mission of excellence to a new arena of professional education. It offers students an opportunity to prepare for multifaceted roles in the physical therapy profession.

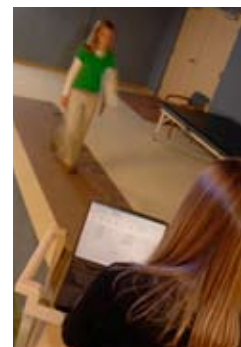
## **A PROGRAM BASED ON A PHILOSOPHY OF EXCELLENCE**

The educational philosophy of the DPT program emphasizes preparation for the continuum of care essential to the well-being of the individual client. The faculty incorporates teaching/learning strategies appropriate for the more mature learner, utilizing current communication and computer technology. The program encourages critical thinking, active learning, strong clinical experiences and an evidence-based approach to treatment interventions.

Graduates will be prepared as clinician generalists to provide services throughout the broad spectrum of care, including intensive care, acute care, rehabilitation, outpatient care, home care and skilled nursing. Physical therapists work as members of the health-care team, and they function as a point of entry into the health-care system.

## **A UNIQUE MODULAR CURRICULUM**

The DPT program's unique modular curriculum is designed to integrate and coordinate courses and modules in a sequence that enhances learning. Students in the program have the opportunity to practice specific learning objectives in a variety of clinical practice settings. The program emphasizes the importance of self-awareness and self-evaluation on the part of the graduate and stresses excellence in clinical skills, compassionate care and leadership in the profession.



The Elon DPT program entails 36 months of full-time study. Didactic education (which includes classroom and laboratories to practice procedures on classmates and clients) with integrated clinical education assignments in a variety of clinical settings occurs throughout the three years.

### **Year I (beginning January)**

Year I consists of a four-week module followed by two 12-week didactic education periods. After a two- to four-week summer break, DPT students return for a 16-week module focused on clients with musculoskeletal problems.

### **Year II**

In Year II, an 8-week clinical education phase is followed by a 16-week module focused on neurosciences and clients with neuromuscular problems. Clinical Practicum II (8 weeks) and Clinical Practicum III (8 weeks) follow. Students return to campus to begin Module IX.

### **Year III**

In Year III, students complete the 12-week Module IX. During Modules X and XI, students focus on patients with complex problems, as well as the pediatric and geriatric client. Students will learn principles of administration and supervision. During Module XII (6 weeks), students participate in clinical practice selective courses preparing them for the 24-week internship.

DPT students return to campus for Module XIV, one week of electives and the graduation ceremony in December.

## **ACCREDITATION**

Elon University is accredited by the Commission on Colleges of the Southern Association of Colleges and Schools (1866 Southern Lane, Decatur, GA 30033-4097; phone: 404-679-4501) to award bachelor's and master's degree, the doctor of physical therapy degree, and the juris doctor degree. The DPT program is accredited by the Commission on Accreditation in Physical Therapy Education of the American Physical Therapy Association (1111 North Fairfax Street, Alexandria, VA 22314; phone: 703-706-3245).

## **PROGRAM MISSION**

Elon University's Doctor of Physical Therapy curriculum, in partnership with Alamance Regional Medical Center, provides graduate professional physical therapy education and supports faculty and student scholarly activity. Solid principles of science and research are incorporated using the highest ethical standards, while looking toward the future of the profession and its role in all health-care delivery systems along the continuum of care.

## **PROGRAM GOALS**

By pursuing this educational mission with integrity and the desire for excellence, the DPT Program will prepare physical therapists who reflect this vision of the profession as espoused by the American Physical Therapy Association:





- Graduates are Doctors of Physical Therapy with enhanced professional identity who are prepared for autonomous practice and direct access to consumers of health care, prevention and wellness services.
- Graduates are recognized by consumers as health-care professionals for the diagnosis, management and prevention of movement-related impairments, functional limitations and disabilities.
- Graduates have a commitment to provide comprehensive and accessible health programs for all people with dignity, respect and sensitivity to and appreciation of individual differences.
- Graduates are motivated and guided by the desire for excellence and the highest possible professional, scientific, ethical, legal and moral standards.
- Graduates render evidence-based physical therapy services to consumers and are committed to lifelong learning through continuing professional education and by pursuing professional growth, development and advancement.
- Graduates are leaders and mentors in the physical therapy profession and promote the profession through their support and involvement in professional organizations, including the American Physical Therapy Association and community groups.

## THE FACULTY

The DPT faculty are academically skilled and bring a balance of clinical expertise and research experience to both the classroom and the clinical skills courses. There are 13 full-time physical therapists with doctoral degrees, four of whom hold American Board of Physical Therapy Specialties (ABPTS), including geriatrics, orthopedics (1) and neurology (2). In addition, there are seven highly qualified part-time faculty who complement the expertise of the full-time faculty. Two part-time faculty members are ABPTS certified in orthopedics and another is certified as a wound care specialist.

The faculty work cooperatively to prepare Elon graduates to be clinician generalists. The curriculum includes many unique active-learning opportunities for the student. Classes and laboratories are small, so the student-faculty ratio creates an environment where faculty are accessible to students. Faculty serve as role models for students through their participation in teaching, research, clinical practice and community service on campus as well as in the greater Elon University community. Faculty are also active in leadership positions with the American Physical Therapy Association and the American College of Sports Medicine.



## COSTS

Tuition for the academic year beginning in January 2009 is \$26,700. Books and living expenses are separate. While campus housing is not available for DPT students, the university provides local housing information to admitted students. A \$150 graduation fee applies to all students. A nonrefundable enrollment fee of \$1,000 is also required (applied to tuition at enrollment).

## REFUNDS

Tuition and fees are refunded on a pro rata basis during the first 13 weeks of each half of the academic year. The first half begins on the first day of classes in January. The second half begins on the first day of July. Following is a table of pro rata charges:

Start of the period through the end of 3rd week ...	10% charge
4th week through the end of the 7th week .....	50% charge
8th week through the end of the 13th week.....	75% charge
14th week .....	No refund

The effective date of withdrawal is determined by the Dean of Student Life. Students who believe circumstances warrant an exception from the published policy must appeal to Gerald Whittington, Vice President of Business, Finance and Technology, 113 Alamance Building.

Unpaid charges owed by the student will be deducted from the calculated refund.

The \$1,000 enrollment fee is nonrefundable.

## EXCEPTIONS TO THE INSTITUTIONAL POLICY

Students receiving Title IV financial aid and attending Elon for the first time will receive refunds as follows:

Refunds will be made to students who (a) do not register for the semester for which Title IV financial aid was intended, or (b) withdraw and do not complete the period of enrollment for which the Title IV assistance was intended. The portion of the period for which a student can receive a refund is computed by dividing the time (in weeks) remaining in the period by the total time (in weeks) of the period and rounding downward to the nearest 10 percent, less any unpaid amount owed to the university. Refunds will not be made after 60 percent of the period has been completed. Each enrollment period is considered to be 25 weeks.

Medical withdrawals will be handled on a case-by-case basis.

## DPT ADMISSIONS REQUIREMENTS AND PROCEDURES

The DPT admissions policy at Elon is designed to select outstanding students who have demonstrated both academic ability and talent in their field. Each application is considered in light of all completed academic work, test scores, evidence of leadership and motivation, work history and credentials, letters of recommendation and a required interview.

Application materials are available from the **Office of Graduate Admissions, 2750 Campus Box, Elon, NC 27244**, on the **Elon Graduate Admissions Web site at [www.elon.edu/graduate](http://www.elon.edu/graduate)** or by calling toll-free **800-334-8448, ext. 3**.

The Elon DPT program is designed for the person with an undergraduate degree in a field other than physical therapy.

Completed applications should be sent directly to the Office of Graduate Admissions and must include:

- Evidence of an earned bachelor's degree from an accredited college or university
- Minimum GPA of 3.0 for undergraduate work (3.2 or higher recommended)



- Official transcripts of all undergraduate and any graduate studies completed or taken
- Minimum combined verbal and quantitative score of 1000 (recommended: verbal score of 450 or higher, quantitative score of 550 or higher and analytical writing score of 3.5 or higher) on the Graduate Record Examinations (GRE) taken within the last five years
- Completion of prerequisite courses
  - Minimum of six science courses selected from the following: biology, chemistry, human anatomy/physiology, exercise science and/or physics (3-credit hour course or higher with lab)
  - Minimum of one psychology course (3-credit hour course or higher)
- Grades of “C” or better are required in each prerequisite course. However, a minimum overall science GPA of 2.8 is required (3.0 or higher recommended). No prerequisite course may be taken on a “pass/no pass” or “credit/no credit” basis; all must be transferable to Elon University.
- Three letters of recommendation

One letter should be written by a practicing physical therapist and one should be from a science instructor qualified to evaluate the applicant’s academic achievement and potential for success as a graduate student.
- Personal statement (instructions are enclosed with application)
- Completion of Work Experience Sheet recording applicant’s knowledge of the physical therapy profession
- Minimum of 100 hours volunteer or work experience in a general health-care setting with at least 20 of these hours in a physical therapy acute inpatient care or hospital setting
- A completed application form with a \$50 nonrefundable fee (check or money order made payable to Elon University)
- The Test of English as a Foreign Language (TOEFL) is required unless English is the student’s native language or the language of instruction. A minimum TOEFL score of 550 (paper-based) or 213 (computer-based) or 79 (Internet-based) is required. English translations of transcripts and explanations of grading systems are required.

Exceptions to these requirements may be considered under special circumstances.

### **TRANSCRIPT REQUESTS**

Contact the registrar of each college or university attended to have an official copy of transcript mailed to Elon. Transcripts should be mailed directly to the **Office of Graduate Admissions, 2750 Campus Box, Elon, NC 27244**. Applicants currently enrolled should request a transcript showing completed academic work through the most recent semester of enrollment; a final transcript will also be required.

**RECOMMENDATIONS**

Applicants should send recommendation forms to each designated individual. Those requested to provide recommendations should be aware of the applicant's academic abilities and professional potential; supervisors are preferred, not family and friends. Recommendations are confidential.

**TESTING FOR DPT STUDENTS: GRE**

Applicants to the DPT program are required to take the Graduate Record Exam. The GRE is a computer-based test and is available year-round at select test centers throughout the United States. Students must request the Educational Testing Service (ETS) to send GRE scores directly to Elon. Elon's ETS code is **5183**. GRE registration bulletins may be obtained from the Office of Graduate Admissions at Elon, via the Internet at [www.gre.org](http://www.gre.org) or by calling 1-800-GRE-CALL.

**INTERNATIONAL STUDENTS**

Because several months may be required to receive and process forms from international applicants, applications and complete documentation should be submitted as early as possible. The Test of English as a Foreign Language (TOEFL) is required unless English is the student's native language or the language of instruction. A minimum TOEFL score of 550 (paper-based) or 213 (computer-based) or 79 (Internet-based) is required for admission to any graduate program at Elon. Exceptions to this requirement may be considered under special circumstances. In addition, a completed Certificate of Financial Responsibility (CFR) is necessary prior to approval of application for admission.

**PREREQUISITE COURSES**

An application will be considered if the prospective student has no more than two courses — one science and one other prerequisite course — remaining to be completed during the summer or fall before enrollment. Applicants must complete all of the following courses prior to enrollment in the program. All science courses must include labs.

**Science Courses (6 courses)**

The applicant must have 6 natural and/or life science courses selected from the following: biology, chemistry, human anatomy/physiology, biomechanics, exercise physiology, kinesiology and/or physics.

**Psychology Course (1 course)**

It is preferred that this course is from the Psychology Department, but an upper-level course from another department may be acceptable.

Each science prerequisite course must have been successfully completed within 10 years prior to the registration date in January. If the 10-year limit has been exceeded, the prerequisite courses must be repeated and completed by the application deadline. However, as stated above, an applicant may have up to one science course and one other course to be taken at the time of application to the program.

Applicants are expected to demonstrate computer skills through college coursework and/or life experiences.



### TRANSFER CREDITS

Students enrolled in the DPT are not permitted to transfer credits from another graduate program. Exceptions to this policy may be permitted in rare circumstances.

### CONTINUATION STANDARDS

DPT students who fail to maintain a cumulative grade point average of at least 3.0 will be placed on academic probation. Any student who receives a second Unsatisfactory (U) grade is subject to dismissal from the program. If a student is dismissed from the program, the student may appeal by employing the procedures for Student Appeals listed in the Elon Student Handbook. For consideration for re-admission into the program, the student must compete with the new applicants for the program.

## GRADUATION AND DEGREE REQUIREMENTS

To earn the DPT degree, the graduate student must:

- Have an overall minimum grade point average of 3.0 in all required DPT courses.
- Submit an application for graduation to the Registrar by October 15 preceding the graduation date.
- Complete all required DPT degree courses and requirements in a satisfactory manner within five calendar years.
- Demonstrate professional entry-level competency as determined through the use of the Clinical Performance Instrument (CPI), an evaluation tool developed by the American Physical Therapy Association. The CPI serves as the exit examination for the DPT program.

***It is the student's responsibility to be familiar with the preceding requirements for graduation.***

## GRADUATE-LEVEL LICENSURE

The DPT graduate is eligible to sit for the licensure examination upon satisfactory completion of all requirements for the DPT degree.

## YEAR I

### MODULE I (4 WEEKS)

#### DPT 600

(4)

#### Psychosocial Aspects of Health Care

Psychological and sociological effects of acute, chronic, progressive, psychiatric, terminal, traumatic and congenital medical problems on the client, family and therapist; the relationship of race, religion, ethnic background, medical beliefs and language to client (patient)-therapist interactions and to the well-being of the client; communication skills used with clients, families and colleagues; and use of self-awareness to enhance the therapist's therapeutic presence.

Emphasis is on clinical application with active student involvement.

*Unsatisfactory course grade – Remediation during Spring Break.*

#### DPT 601

(2)

#### Today's Health Care Systems

World and national factors that affect today's systems: who gets care and how it is paid for; legal and ethical responsibilities; where does physical therapy fit; team approach.

*Unsatisfactory course grade – Remediation during Spring Break.*



**DPT 602 (1)**  
**Principles of Teaching and Learning**

Teaching-learning theories applied to clinical practice with clients and their families. Teaching techniques for giving presentations and demonstrations to various audiences. Methods of self-assessment and learning assessment taught.

*Unsatisfactory course grade -- Remediation at end of Year I of curriculum.*

**DPT 603 (604) (5)**  
**Human Anatomy I (II)**  
*In Progress*

Two-course sequence of normal human anatomy with emphasis on upper and lower extremities: donor dissection using a regional approach. During Module I there will be 12 hours of instruction in human histology.

*Unsatisfactory course grade – Re-enroll and retake course next year. WILL NOT CONTINUE IN THE CURRICULUM.*

---

**Total Module I Credits 7**

---

**MODULE II (12 WEEKS)**

**DPT 603 (604) (5) (5)**  
**Human Anatomy I (II)**

Continued from Module I. DPT 603 and 604 will be coordinated with DPT 605 and 606, Human Physiology and Pathophysiology.

*Unsatisfactory course grade – Re-enroll and retake course next year. WILL NOT CONTINUE IN THE CURRICULUM.*

**DPT 605 (606) (5) (5)**  
**Human Physiology and Pathophysiology I (II)**

Module II will focus upon normal human physiology. The normal function of major subsystems to include nervous, muscular, cardiovascular, respiratory, renal and endocrine systems as a basis for human movement and function.

Module III will focus upon how the normal human physiology is altered when pathologic conditions occur. Students will integrate information of the pathophysiology of major subsystems discussed in Module II.

DPT 605 and 606 will be coordinated with DPT 603 and 604, Human Anatomy.

*Unsatisfactory course grade – Re-enroll and retake course next year. WILL NOT CONTINUE IN THE CURRICULUM.*

**DPT 607 (3)**  
**Physical Therapy Science I**

Introduction to physical therapy skills of assessment and intervention for patient mobility including bed mobility, gait training, ambulation aids, transfers, wheelchair mobility, wheelchair and cushion selection, passive range of motion therapeutic exercises, draping, mobility management of patient with lines, leads and tubes, and monitoring of patient's physiologic responses to mobility activities.

*Unsatisfactory course grade – Remediation during Year I summer break.*

**DPT 608 (2)**  
**Physical Therapy Science II**

Application of physiologic principles used with application of hydrotherapy, superficial heat and cold, thermal and non-thermal ultrasound in management of patient's injuries. Emphasis on problem solving and clinical reasoning to determine most appropriate interventions based upon stage of injury and patient's clinical signs and symptoms. Enhance skills in history taking and commonly utilized documentation methods. Practice skills required to maintain a sterile environment or universal precautions.

*Unsatisfactory course grade – Remediation during Year I summer break.*

**DPT 611 (621) (3) (2)**  
**Research Design I (II)**

Review statistical and experimental procedures used in biomedical research. Develop skills to critically evaluate and discuss scientific literature. Participate in a group project to identify a research topic, write an institutional/review board application, collect and analyze data, and make a poster presentation to the Elon community.

*Unsatisfactory course grade – Remediation during summer break in Year I of curriculum.*

**DPT 612(613)(619)(703) (1) (1) (1) (1)**  
**Clinical Seminar I (II) (III) (IV)**

Series of four clinical skills laboratory courses throughout the DPT curriculum. Emphasis on enhancement of student's generic abilities, interview skills, documentation, examination skills, intervention strategies, utilization of evidence-based decision-making model with justification for examination and intervention strategies, prioritize patient problems and identify step-wise progression of patient with appropriate use of therapeutic exercises. Conduct laboratory sessions in mock clinical setting (to include broad spectrum of the continuum of care settings) where student must balance ethical dilemmas



with payment limitations created by today's health-care systems. Provide opportunity for student to practice clinical problem solving in a supportive environment. Each course will build upon the skills from previous modules. Early seminar courses will present simple patient (client) cases; later courses will emphasize the complex patient. Student expected to justify choices and decisions about patient care in "grand rounds" style. By the end of Seminar IV, student will demonstrate self-confidence in clinical skills and decision-making abilities. Goal is to prepare the student for the contemporary world of physical therapy. Student use of evidence-based decision making to permeate the entire 36-month curriculum.

*Unsatisfactory course grade – Remediation during summer break in Year I of curriculum for DPT 612 and DPT 613.*

*(DPT 619) Remediation during Module V for DPT 619. WILL DELAY DPT 700 Clinical Practicum I. WILL DELAY GRADUATION from the program.*

*(DPT 703) Remediation during Module VII for DPT 703. WILL DELAY GRADUATION from the program.*

---

**Total Module II Credits** **19**

---

### MODULE III (12 WEEKS)

**DPT 604** (5)  
**Human Anatomy II**  
 (Continued from Modules I and II)

*Unsatisfactory course grade – Re-enroll and retake course next year. WILL NOT CONTINUE IN THE CURRICULUM.*

**DPT 606** (5)  
**Human Physiology and -- Pathophysiology II**  
 (Continued from Module II)

*Unsatisfactory course grade – Re-enroll and retake course next year. WILL NOT CONTINUE IN THE CURRICULUM.*

**DPT 609** (3)  
**Physical Therapy Science III**

Basic skills of goniometry, manual muscle testing and postural evaluation to measure impairment.

*Unsatisfactory course grade – Remediation during summer break of Year I of curriculum.*

**DPT 610** (2)  
**Human Motor Development**

Examine early attainment of movement and developmental changes in body structures and systems which impact motor skill acquisition.

Emphasis placed on early system changes; however, lifespan comparisons introduced. Typical motor development presented in terms of relationships that motor performance has with growth and maturation of musculoskeletal, neurological, physiological and sensory systems. Classroom and laboratory reflect diversity of development among individuals and cultures.

*Unsatisfactory course grade – Remediation during summer break of Year I of curriculum.*

**DPT 613** (1)(1)(1)  
**Clinical Seminar II (III) (IV)**

Second seminar in series of four. See course description in Module II.

*Unsatisfactory course grade – Remediation during summer break of Year I of curriculum.*

**DPT 614** (4)  
**Foundations of Biomechanics and Musculoskeletal Management**

Functional characteristics of bone, connective tissue and skeletal muscle presented. Principles of biomechanics (kinematics and kinetics) to develop conceptual framework for human motion discussed. Biomechanics of posture and gait addressed.

Basic concepts of musculoskeletal management are presented to prepare the student for application to specific regional problems in Module IV, three courses: DPT 616, 617, 618: Biomechanics and Management of Musculoskeletal Dysfunction I, II and III. Content includes an introduction to orthopedic physical therapy, the five steps of patient/client management outlined in The Guide to Physical Therapist Practice, modes of diagnostic imaging, upper and lower half screens, clinical applications of tissue mechanics, joint mobilization, muscle length testing, strengthening, stretching, ergonomics and body mechanics, and issues regarding referral and patient/client adherence.

*Unsatisfactory course grade – Remediation during summer break.*

---

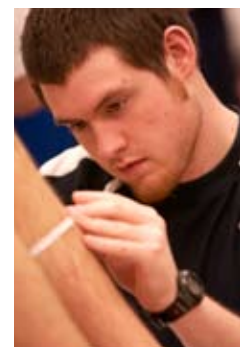
**Total Module III Credits** **20**

---

### MODULE IV (16 WEEKS)

**DPT 616, 617, 618** (7) (6) (6)  
**Biomechanics and Management of Musculoskeletal Dysfunction I-III**

Biomechanics and patient/client management of musculoskeletal dysfunction will be approached regionally and sequenced proximal to distal during the progression of three courses.



Content includes joint mechanics and functional anatomy (arthrokinematic and osteokinematic motion), common pathologies/dysfunctions and management of those problems to include patient/client history, documentation, systems review, tests and measures, diagnosis, prognosis and intervention. Diagnostic imaging and pharmacology integrated into three courses. An analysis of total body movement as well as individual joints is utilized to assist understanding of biomechanics and orthopedic management.

*Unsatisfactory course grade – Remediation during Module V, will delay DPT 700 Clinical Practicum I. WILL DELAY GRADUATION from the program.*

**DPT 619 (1) (1)**  
**Clinical Seminar III (IV)**

Third seminar in series of four. See course description in Module II.

*Unsatisfactory course grade – Remediation during Module V. Will delay DPT 700 Clinical Practicum I. WILL DELAY GRADUATION from the program.*

**DPT 620 (1)**  
**Clinical Imaging**

Elements of reading roentgenographs, CAT and MRI scans for the physical therapist to enhance patient interventions.

*Unsatisfactory course grade – Remediation during Module V. WILL DELAY DPT 700 Clinical Practicum I. WILL DELAY graduation from the program.*

**DPT 622 (1)**  
**Therapeutic Pharmacokinetics**

Effects of commonly used drugs in patients with physical disability; side effects that alter physical performance or responses to exercise.

*Unsatisfactory course grade – Remediation during Module V. WILL DELAY DPT 700 Clinical Practicum I. WILL DELAY graduation from the program.*

**DPT 621 (2)**  
**Research Design II**  
**(Continued from Module III, Research Design I)**

*Unsatisfactory course grade – Remediation during Module V. WILL DELAY DPT 700 Clinical Practicum I. WILL DELAY graduation from the program.*

---

**Total Module IV Credits 24**

**YEAR II**

**MODULE V (8 WEEKS)**

**DPT 700 (4)**  
**Clinical Practicum I**

First of three 8-week, full-time clinical education requirements integrated into the 3-year DPT curriculum. Designed to provide the student with opportunity to apply knowledge and skills acquired in Year I; an emphasis on patients/clients with musculoskeletal diagnoses, as defined in the American Physical Therapy Association's Guide to Physical Therapist Practice. The course will be graded as Satisfactory (S) or Unsatisfactory (U).

*Unsatisfactory course grade – Remediation during Module VII. WILL DELAY GRADUATION from the program.*

---

**Total Module V Credits 4**

**MODULE VI (16 WEEKS)**

**DPT 701 (10)**  
**Neuroscience**

Anatomy and physiology of the human nervous system; development, cellular, chemical and structural basis for normal and abnormal sensorimotor and higher cognitive function. Discusses the clinically relevant pathological sequelae and the neurobiological basis for clinical intervention. Emphasizes a highly organized and interconnected nervous system with multiple mechanisms of neuroplasticity. Neuroimaging and pharmacokinetics integrated into the course.

*Unsatisfactory course grade – Remediation during Module VII. WILL DELAY DPT 704 Clinical Practicum II. WILL DELAY GRADUATION from the program.*

**DPT 702 (12)**  
**Management of Neuromuscular Disorders**

Systematic, problem-solving approach to neurologic problems of the central and peripheral nervous systems with emphasis on epidemiology, clinical signs and symptoms, medical/surgical interventions, P.T. examination and interventions, and outcomes: laboratory included.

*Unsatisfactory course grade – Remediation during Module VII. WILL DELAY DPT 704 Clinical Practicum II. WILL DELAY GRADUATION from the program.*





**DPT 703** (1)  
**Clinical Seminar IV**

Fourth seminar in series of four. See course description in Module II.

*Unsatisfactory course grade – Remediation before Module VII. WILL DELAY DPT 805 Internship. WILL DELAY GRADUATION from the program.*

---

**Total Module VI Credits** **23**

---

**MODULE VII (8 WEEKS)**

**DPT 704** (4)  
**Clinical Practicum II**

Second 8-week, full-time clinical education requirement integrated into the 3-year DPT curriculum designed to provide the student opportunity to apply knowledge and skills acquired during Year I and II. Depending on the student's clinical setting for DPT 700, clinical settings for DPT 704 (Clinical Practicum II) and DPT 711 (Clinical Practicum III) will be selected so the student meets the Acute Care, OP/Ambulatory, Rehabilitation, and/or neuromuscular patient diagnoses requirements as defined in the American Physical Therapy Association's Guide to Physical Therapist Practice. The course will be graded as Satisfactory (S) or Unsatisfactory (U).

*Unsatisfactory course grade – Remediation during Module VIII. WILL DELAY GRADUATION from the program.*

---

**Total Module VII Credits** **4**

---

**MODULE VIII (8 WEEKS)**

**DPT 711** (4)  
**Clinical Practicum III**

Third 8-week, full-time clinical education requirement integrated into the 3-year DPT curriculum designed to provide the student opportunity to apply knowledge and skills acquired during Year I and II. Depending on the student's clinical setting for DPT 700, clinical settings for DPT 704 (Clinical Practicum II) and DPT 711 (Clinical Practicum III) will be selected so the student meets the Acute Care, OP/Ambulatory, Rehabilitation, and/or neuromuscular patient diagnoses requirement as defined in the American Physical Therapy Association's Guide to Physical Therapist Practice. The course will be graded as Satisfactory (S) or Unsatisfactory (U).

*Unsatisfactory course grade – Remediation during Module XIII. WILL DELAY GRADUATION from the program.*

---

**Total Module VII Credits** **4**

---

**YEAR III**

**MODULE IX (12 WEEKS)**

**DPT 705** (4)  
**Principles of Electrotherapeutic Examination and Intervention**

Basic concepts in electrical safety and instrumentation, detailed concepts and applications of electrotherapy introducing principles of electrophysiologic testing and therapeutic application of electrical stimulation (ES), including strengthening (NMES), re-education, pain reduction (TENS), tissue repair (ESTR) and iontophoresis. Electrophysiologic testing to include an introduction to electromyography (EMG), nerve conduction velocity (NCV) and other electrophysiological tests.

*Unsatisfactory course grade – Remediation during Module XII. WILL DELAY DPT 805 Internship. WILL DELAY GRADUATION from the program.*

**DPT 706** (5)  
**Physiology of Exercise**

Human physiologic responses to exercise including changes and adaptations in cardiopulmonary, musculoskeletal and neuromuscular systems across the life span, including normal response and response of those with special needs. Exercise training principles explored through case presentations laboratory experiences, class discussion and lecture. Basic nutrition principles taught in relationship to exercise.

*Unsatisfactory course grade – Remediation during Module XII. WILL DELAY DPT 805 Internship. WILL DELAY GRADUATION from the program.*

**DPT 707** (4)  
**Management of Cardiopulmonary Dysfunction**

Cardiac and pulmonary pathophysiology of patients to include physical therapy management of clients, laboratory and lecture.

*Unsatisfactory course grade – Remediation during Module XII. WILL DELAY DPT 805 Internship. WILL DELAY GRADUATION from the program.*

**DPT 708** (3)  
**Prosthetics and Orthotics**

Examination and intervention through application of prosthetic and orthotic devices for patients (clients). Analysis of gait patterns created through use of prosthetic and orthotic devices; includes laboratory.

*Unsatisfactory course grade – Remediation during Module XII. WILL DELAY DPT 805 Internship. WILL DELAY GRADUATION from the program.*



**DPT 709 (809) (1) (1)**  
**Directed Research I (II)**

Guided instruction in the development, planning and writing of a case study. Final submission of case study to be publication ready.

*Unsatisfactory course grade – Remediation during Module XII. WILL DELAY DPT 805 Internship. WILL DELAY GRADUATION from the program.*

**DPT 710 (1)**  
**Management of Integumentary Disorders**

Systematic, problem-solving approach to integumentary disorders with emphasis on etiology, pathophysiology, examination techniques and approaches, clinical signs and symptoms, multi-disciplinary considerations, and evidence-based treatment approaches.

*Unsatisfactory course grade – Remediation during Module X. WILL DELAY DPT 704 Clinical Practicum II. WILL DELAY GRADUATION from the program.*

---

**Total Module VIII Credits 18**

**MODULE X (4 WEEKS)**

**DPT 800 (4)**  
**Clinical Decision Making with Complex Patient (Client)**

Role of physical therapy in rehabilitation of client with complex and/or multiple problems of the neurologic, musculoskeletal and/or cardiopulmonary systems. Emphasis on clinical problem solving to obtain the desired functional outcome for the client. Guided instruction to assist the student to make appropriate clinical decisions regarding examination, intervention(s) with emphasis on functional outcomes, clinical decisions to progress the patient with relevant therapeutic exercise programs. Emphasis on use of evidence-based research to determine intervention(s). Videotaped client case presentations will follow patient through the numerous levels of care including intensive care to home care, laboratory and lecture.

*Unsatisfactory course grade – Remediation during Module XII. WILL DELAY DPT 805 Internship. WILL DELAY GRADUATION from the program.*

**DPT 801 (4)**  
**Management of the Pediatric Client**

Systematic, problem-solving approach to the pediatric client with emphasis on prevention, etiology, clinical manifestations, examination and interventions. Identify central issues related to therapeutic intervention for children and their families; includes laboratory.

*Unsatisfactory course grade – Remediation during Module XII. WILL DELAY DPT 805 Internship. WILL DELAY GRADUATION from the program.*

---

**Total Module X Credits 8**

**MODULE XI (4 WEEKS)**

**DPT 802 (4)**  
**Principles of Administration and Management**

Organization and administration of a physical therapy department including budget considerations, reimbursement methods, hiring-interviewing techniques, medical-legal-ethical issues and roles of team members including PTA.

*Unsatisfactory course grade – Remediation during Module XII. WILL DELAY DPT 805 Internship. WILL DELAY GRADUATION from the program.*

**DPT 803 (4)**  
**Geriatric Health and Wellness**

Holistic approach to geriatric client as an active participant in health-care process. Focus on normal developmental process of aging, preventive care and management of pathological aging.

*Unsatisfactory course grade – Remediation during Module XII. WILL DELAY DPT 805 Internship. WILL DELAY GRADUATION from the program.*

---

**Total Module XI Credits 8**

**MODULE XII (6 WEEKS)**

**DPT 804 (12)**  
**Advanced Clinical Practice Selective Tracks**

Advanced study in selected topic areas including the broad spectrum of primary clinical practice settings. Generally, students focus on one of two areas: musculoskeletal or neuromuscular rehabilitation. Topics included may vary from year to year. Emphasis will be on advanced clinical skills to prepare students for today's demanding health-care environment. Goal is to prepare students for six-month internship.

In lieu of advanced study in one of two areas, selected student(s) may request an independent study in physical therapy. Request to be generated by student through a faculty sponsor. Requires advanced approval (by end of Year II of the DPT curriculum) of the Department of Physical Therapy Education faculty. Student contact time per selective will be 144 hours (six weeks x 24 hours per week with much of the course taught in a mock clinical setting with patients/clients present).



*Unsatisfactory course grade – Remediation during Module XII. WILL DELAY DPT 805 Internship. WILL DELAY GRADUATION from the program.*

---

**Total Module XII Credits** **12**

---

### MODULE XIII (24 WEEKS)

**DPT 805** (12)  
**Internship**

Twenty-four (24) week, full-time clinical education experience designed to provide the student opportunities to integrate all didactic knowledge to reach entry-level clinical competency. Frequent use of computer technology to acquire research evidence to support clinical decision making for each patient/client. Internet connections among students, preceptors and Elon faculty. Synchronous and non-synchronous chat rooms. Internship designed to integrate critical inquiry, administration, education and consultation into all aspects of patient/client management as defined by the Guide to Physical Therapy Practice.

*Unsatisfactory course grade will require remediation in another clinical setting. The number of*

*weeks required (up to 24 weeks) will be determined by the course instructor in cooperation with the clinical preceptor. A second Unsatisfactory course grade may result in dismissal from the program. WILL DELAY GRADUATION from the program.*

**DPT 809** (1)  
**Directed Research II**

Completion of case study to include submission in publication ready format.

*Unsatisfactory course grade - Remediation following Module XII. WILL DELAY GRADUATION from the program.*

---

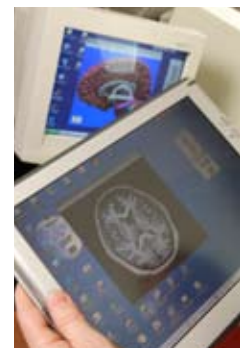
**Total Module XIII Credits** **13**

---

### MODULE XIV

#### Electives

Students will select from a variety of topics for classes presented in the style of continuing education courses. Also, a licensure review course is offered. Attendance is required.



### ADMINISTRATION

**Leo M. Lambert, B.A., M.Ed., Ph.D.**  
President

**Gerald L. Francis, B.S., M.A., Ph.D.**  
Provost and Vice President for Academic Affairs

**Nancy S. Midgette, B.A., M.A., Ph.D.**  
Associate Provost and Interim Dean

**Elizabeth A. Rogers, B.S., M.Ed., Ed.D.**  
Associate Dean of the Department of Physical Therapy Education

**Arthur W. Fadde, B.S., M.Ed.**  
Assistant Dean of Admissions and Director of Graduate Admissions

**Mark R. Albertson, B.B.A.**  
University Registrar

### FACULTY

**Addison Williams Andrews, Assistant Professor of Physical Therapy**  
B.S. in Physical Therapy, University of North Carolina at Chapel Hill; M.S., University of North Carolina at Chapel Hill; Ed.D., North Carolina State University; Clinical Specialist in Neurologic Physical Therapy

**Stephen P. Bailey, Associate Professor of Physical Therapy**  
B.A., Western Maryland College; B.S., Medical University of South Carolina; M.A., Wake Forest University; Ph.D., University of South Carolina; Fellow, American College of Sports Medicine

- Robert Bartlett**, *Professor of Physical Therapy*  
B.S., Springfield College; M.Ed., New York University; Fellow, American Physical Therapy Association
- Carrie Ann Brice**, *Assistant Professor of Physical Therapy*  
B.S., M.S., D'Youville College; D.P.T., Elon University
- (Joe) Gray Carpenter**, *Assistant Professor of Physical Therapy*  
B.S., East Carolina University; D.P.T., University of North Carolina at Chapel Hill, Clinical Specialist in Orthopedic Physical Therapy
- Susan A. Chinworth**, *Associate Professor of Physical Therapy*  
B.S., Washington University; M.S., University of North Texas; Ph.D., Texas Woman's University
- Janet M. Cope**, *Assistant Professor of Physical Therapy*  
B.S., University of New Hampshire; M.A., Springfield College; M.A., University of Massachusetts at Amherst; Ph.D., University of Massachusetts at Amherst
- Gail D. Deyle**, *Assistant Professor of Physical Therapy*  
B.S., University of Nebraska; MPT, U.S. Army – Baylor University; D.P.T., Creighton University; D.Sc., Andrews University; Fellow in American Academy of Orthopaedic Manual Physical Therapist (FAAOMPT); Clinical Specialist in Orthopaedic Physical Therapy
- Stephen E. Folger**, *Associate Professor of Physical Therapy*  
B.S., Ithaca College; Ph.D., University of North Carolina at Chapel Hill
- Jane Freund**, *Assistant Professor of Physical Therapy*  
B.S., East Stroudsburg State College; MPT, U.S. Army – Baylor University; M.S., University of North Carolina at Chapel Hill; D.P.T., Arizona Health Sciences University; Clinical Specialist in Neurologic Physical Therapy
- Kerri K. Harrison**, *Assistant Professor of Physical Therapy*  
B.H.S., Oakland University; Pharm.D., University of Michigan
- Paula Hudson**, *Assistant Professor of Physical Therapy*  
B.S., Northeastern University; M.S., University of North Carolina at Chapel Hill; D.P.T., Massachusetts General Hospital Institute of Health Professions
- Marianne Janssen**, *Associate Professor of Physical Therapy*  
B.S., Jan van Essen Academy; M.S., United States Sports Academy; Ed.D., Nova Southeastern University; Certified Athletic Trainer
- Charity Johansson**, *Professor of Physical Therapy*  
B.A., Wake Forest University; M.A., Stanford University School of Medicine; Ph.D., University of North Carolina at Chapel Hill; Clinical Specialist in Geriatric Physical Therapy
- Carolyn Johnson**, *Assistant Professor of Physical Therapy*  
B.S., Winston-Salem State University; M.P.T., D.P.T., Elon University
- Daryl Lawson**, *Assistant Professor of Physical Therapy*  
B.S., Central Michigan University; M.P.T., University of Southern California; DSc., Loma Linda University
- Cynthia Lynn Lewis**, *Associate Professor of Physical Therapy*  
B.S., Guilford College; M.S., Duke University; M.S., University of North Carolina at Chapel Hill; Ph.D., University of North Carolina at Greensboro
- Elisabeth Pennington**, *Assistant Professor of Physical Therapy*  
B.A., North Carolina State University; M.A., University of North Carolina at Greensboro; C.C.C. – Speech-Language Pathology
- Elizabeth A. Rogers**, *Professor of Physical Therapy/Associate Dean*  
B.S., Loma Linda University; M.Ed., Boston University; Ed.D., University of Houston/Baylor College of Medicine
- Deborah M. Stetts**, *Assistant Professor of Physical Therapy*  
B.S., Pennsylvania State University; M.P.T., U.S. Army - Baylor University; M. Strategic Studies - U.S. Army War College; D.P.T., A.T. Still University; Fellow in American Academy of Orthopaedic Manual Physical Therapy; Clinical Specialist in Orthopaedic Physical Therapy
- Robin Waldron**, *Assistant Professor of Physical Therapy*  
B.S., East Carolina University; D.P.T., Elon University